




**Torque wrench**

CrV 6140 3/8" 45T



\* measurement tolerance +/- 3%


YATO 	Ø	Nm	L(mm)	scale deviation
YT-07730	3/8"(9.5mm)	6-30	318	0.10
YT-07731	3/8"(9.5mm)	10-60	388	0.25
YT-07732	3/8"(9.5mm)	20-100	443	0.5
YT-07733	3/8"(9.5mm)	25-125	443	0.5

**Torque wrench**

CrV 6140 1/2" 45T



\* measurement tolerance +/- 3%

YATO 	Ø	Nm	L(mm)	scale deviation
YT-07740	1/2"(12.7mm)	10-60	388	0.25
YT-07741	1/2"(12.7mm)	20-100	443	0.5
YT-07742	1/2"(12.7mm)	25-125	443	0.5
YT-07743	1/2"(12.7mm)	40-200	468	1.0
YT-07744	1/2"(12.7mm)	65-335	528	1.0

**Torque wrench**

CrV 6140 1/4" 45T



\* measurement tolerance +/- 3%


YATO 	Ø	Nm	L(mm)	scale deviation
YT-07720	1/4"(6.3mm)	1-5	240	0.025
YT-07721	1/4"(6.3mm)	2-10	252	0.05
YT-07722	1/4"(6.3mm)	2.5-12	290	0.05
YT-07723	1/4"(6.3mm)	4-20	290	0.10

**Torque wrench**

CrV 6140 3/4" 45T



\* measurement tolerance +/- 3%

YATO 	Ø	Nm	L(mm)	scale deviation
YT-07750	3/4"(19.0mm)	80-400	700	2.0
YT-07751	3/4"(19.0mm)	100-500	855	2.5
YT-07752	3/4"(19.0mm)	160-800	1055	4
YT-07753	3/4"(19.0mm)	200-1000	1055	5

### Torque wrench

CrV 6140 1" 45T



• measurement tolerance +/- 3%

YATO	O	Nm	L(mm)	scale deviation
YT-07760	1"(25.4mm)	160-800	1055	4
YT-07761	1"(25.4mm)	200-1000	1055	5
YT-07762	1"(25.4mm)	300-1500	2200	5
YT-07763	1"(25.4mm)	400-2000	2200	10
YT-07764	1"(25.4mm)	600-3000	2780	15

### Torque wrench

CrV 6140 9x12 mm



• measurement tolerance +/- 3%

YATO	O	Nm	L(mm)	scale deviation
YT-07850	9X12mm	2.5-12	284	0.05
YT-07851	9X12mm	4.0-20	284	0.10
YT-07852	9X12mm	6.0-30	303	0.10
YT-07853	9X12mm	10-60	372	0.25
YT-07854	9X12mm	20-100	427	0.5
YT-07855	9X12mm	25-125	427	0.5

### Torque wrench

CrV 6140 14x18 mm



• measurement tolerance +/- 3%

YATO	O	Nm	L(mm)	scale deviation
YT-07856	14X18mm	40-200	460	1.0
YT-07857	14X18mm	65-335	520	1.0
YT-07858	14X18mm	80-400	700	2.0

### Torque wrench

CrV 6140 24x32 mm



• measurement tolerance +/- 3%

YATO	O	Nm	L(mm)	scale deviation
YT-07859	24X32mm	100-500	855	2.5
YT-07860	24X32mm	160-800	1055	4
YT-07861	24X32mm	200-1000	1055	5

### Torque wrench

CrV 6140 27x36 mm



• measurement tolerance +/- 3%

YATO	O	Nm	L(mm)	scale deviation
YT-07862	27X36mm	300-1500	1260	5
YT-07863	27X36mm	400-2000	2200	10
YT-07864	27X36mm	600-3000	2780	15

### Torque wrench

CrV 6140



• measurement tolerance +/- 3%

YATO	O	Nm	L(mm)	scale deviation
YT-07830	1/4"	0-5	340	0.05
YT-07831	3/8"	0-10	340	0.1
YT-07832	3/8"	0-30	340	0.25
YT-07833	1/2"	0-50	390	0.5
YT-07834	1/2"	0-100	390	1
YT-07835	1/2"	0-200	500	2
YT-07836	1/2"	0-300	600	3

**Torque wrench**

CrV 6140 3.3:1 5:1 25:1



• measurement tolerance +/- 5%

YATO	F	T <sub>max.</sub> (Nm)	M	T <sub>max.</sub> (Nm)	Increase rate
YT-07880	1/2"	303	3/4"	1000	3.3:1
YT-07881	1/2"	200	3/4"	1000	5:1
YT-07882	1/2"	300	1"	1500	5:1
YT-07883	1/2"	100	1"	2500	25:1
YT-07884	1/2"	140	1-1/2"	3500	25:1
YT-07885	1/2"	160	1-1/2"	4000	25:1
YT-07886	1/2"	240	1-1/2"	6000	25:1
YT-07887	1/2"	320	1-1/2"	8000	25:1
YT-07888	1/2"	400	1-1/2"	10000	25:1

**Torque wrench**

CrV 6140 3/8" 1/2"



• measurement tolerance +/- 4%

YATO	O	Nm	L(mm)	
YT-0750	3/8" (9.5mm)	19-110	366	20
YT-0760	1/2" (12.7mm)	42-210	470	12

**Torque wrench**

3/4" 1/2"



- application: automotive service stations, trucks
- wrench and extension pipe designed to tighten screws in double wheels
- measurement tolerance +/- 3%

YATO	O	Nm	L(mm)	
YT-0761	1/2" (12.7mm)	42-210	535	10
YT-0770	3/4" (19.0mm)	100-500	865	4
YT-0771	3/4" (19.0mm)	140-980	1230	2

**Torque wrench**

CrV 6140



- measurement tolerance +/- 3%
- can measure the torque in two directions

YATO	O	Nm	L(mm)	
YT-0751	1/4" (6.3mm)	2-10	281	24
YT-07401	1/4" (6.3mm)	4-20	322	24
YT-0752	3/8" (9.5mm)	4-20	325	24
YT-07402	3/8" (9.5mm)	10-60	337	24
YT-0753	3/8" (9.5mm)	20-100	435	12

CrV 6140



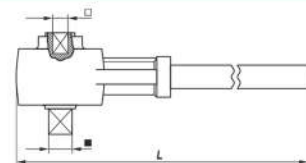
- measurement tolerance +/- 3%
- can measure the torque in two directions

YATO	O	Nm	L(mm)	
YT-07403	1/2" (12.7mm)	20-100	436	12
YT-07404	1/2" (12.7mm)	40-200	512	10
YT-0754	1/2" (12.7mm)	60-340	613	10

**Torque wrench**

3:1 1/2" 34" 460Nm 1400Nm

CrMo 4140 3/4" 1" 900Nm 2700Nm



YATO	F	T <sub>max.</sub> (Nm)	M	T <sub>max.</sub> (Nm)	L(mm)		
YT-0780	1/2" (12.7mm)	460	3/4"	1400	420	2300	6
YT-0781	3/4" (19.0mm)	900	1"	2700	500	4800	4

**Cautions**

1. After the first using or being left unused for longer time and it is required to use once again, be sure to use higher torque to operate for 5-10 times so that the components within may be fully lubricated by the special-purpose lubricant oil. When it is not used, be sure to set the torque to the lowest value.
2. Torque wrench need to be calibrated after using 5000 times.
3. Do not keep applying pressure after reaching the preset torque, otherwise the work piece may get damaged.
4. Upon the ex-factory, the torque wrench has been calibrated and tested, and meet its accuracy.
5. Do not soak in any liquid to avoid affecting the lubrication inside.

### Torque wrench

3/4" CrV 6140



• can measure the torque in two directions

YATO	Ø	Nm	L(mm)	
YT-07405	3/4" (19.0mm)	100-600	1050	2
YT-07406	3/4" (19.0mm)	150-800	1240	2

### Torque wrench

1" CrV 6140



• measurement tolerance +/- 3%  
• can measure the torque in two directions

YATO	Ø	Nm	L(mm)	
YT-07407	1" (25.4mm)	150-800	1240	2
YT-07408	1" (25.4mm)	200-1000	1240	2
YT-0756	1" (25.4mm)	300-1500	1850	2

### Torque wrench

CrV 6140



• measurement tolerance +/- 4%

YATO	Ø	Nm	L(mm)	
YT-07410	1/4" (6.3mm)	5-25	290	10
YT-07411	3/8" (9.5mm)	10-50	360	10
YT-07412	3/8" (9.5mm)	10-100	405	10
YT-07413	1/2" (12.7mm)	10-100	405	10
YT-07414	1/2" (12.7mm)	20-200	500	10
YT-07415	1/2" (12.7mm)	60-300	595	10
YT-07416	1/2" (12.7mm)	80-400	680	8
YT-07417	3/4" (19.0mm)	100-550	970	2
YT-07418	3/4" (19.0mm)	150-750	1150	2
YT-07419	1" (25.4mm)	150-750	1150	2
YT-07420	1" (25.4mm)	300-1000	1250	2

### Digital torque wrench

CrV 6140



• measurement tolerance +/- 3%

YATO	Ø	Nm	L(mm)	
YT-07501	3/8" (9.5mm)	10-135	394	6
YT-07502	3/8" (9.5mm)	20-200	569	6
YT-07503	1/2" (12.7mm)	10-135	394	6
YT-07504	1/2" (12.7mm)	20-200	569	6
YT-07505	1/2" (12.7mm)	34-340	769	4
YT-07507	3/4" (19.0mm)	60-600	1248	1
YT-07513	3/4" (19.0mm)	80-800	1248	1
YT-07514	3/4" (19.0mm)	100-1000	1248	1
YT-07515	1" (25.4mm)	150-1500	1150	2

**Digital torque wrench**



- application: industry, service stations
- precise digital torque measurement
- internal memory
- can measure the torque in two directions
- accuracy +/-2%



YATO	Ø	Nm	L(mm)	☐
YT-0762	1/2" (12.7mm)	2-203	450	10

**torque wrench**



- measurement tolerance +/- 4%
- can measure the torque in two directions

YATO	Ø	Nm	L(mm)	☐
YT-07500	3/8" (9.5mm)	5-60	383	12

**torque wrench**



- measurement tolerance +/- 4%
- can measure the torque in two directions

YATO	Ø	Nm	L(mm)	☐
YT-07511	1/4" (6.3mm)	4-20	285	16

**torque wrench**



- measurement tolerance +/- 4%
- can measure the torque in two directions

YATO	Ø	Nm	L(mm)	☐
YT-07601	1/2" (12.7mm)	65-335	523	16
YT-07611	1/2" (12.7mm)	10-60	383	16

**torque wrench**



- measurement tolerance +/- 4%
- can measure the torque in two directions

YATO	Ø	Nm	L(mm)	☐
YT-07712	3/4" (19.0mm)	80-400	700	16

**beam torque wrench**



YATO	Ø	Nm	☐
YT-07641	1/2" (12.5mm)	0-300	16
YT-07642	3/4" (19.0mm)	0-500	9

### Digital torque wrench

CrV 6140



• measurement tolerance +/- 3%

YATO	joint size	Nm	L(mm)	
YT-07430	9x12	10-135	365	6
YT-07431	9x12	20-200	540	6

### Torque screwdriver

1/4"



• material: alloy steel  
• measurement tolerance +/- 5%

YATO		Nm	L(mm)		
YT-07525	1/4" (6.3mm)	1-5	154	207	30
YT-07526	1/4" (6.3mm)	1-8	235	475	30

### Torque wrench

CrV 6140

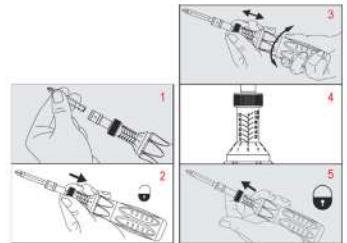


• measurement tolerance +/- 3%

YATO	joint size	Nm	L(mm)	
YT-07421	9x12	2-10	260	25
YT-07424	9x12	10-60	310	25
YT-07426	9x12	25-125	430	16
YT-07427	14x18	20-100	430	16

### Torque screwdriver

1/4"



• material: alloy steel  
• measurement tolerance +/- 5%

YATO		Nm	L(mm)		
YT-07517	1/4" (6.3mm)	0.1-1.2	180	207	24
YT-07518	1/4" (6.3mm)	1-6	248	475	24

### Torque wrench



• measurement tolerance +/- 3%  
• insert size: 13,14,15,17,19,22,24,27,30mm

YATO		Nm	L(mm)	
YT-0767	1/2" (12.7mm)	40-210	500	4

### Digital torque screwdriver

1/4"



• material: alloy steel  
• measurement tolerance +/- 2%

YATO		Nm	L(mm)		
YT-07520	1/4" (6.3mm)	0.3-3	215	150	20
YT-07521	1/4" (6.3mm)	0.6-6	215	150	20

**Ring insert tool**

CrV  
6140



YATO	size(mm)	joint size	Ⓜ	📦
YT-07465	7	9x12	37	300
YT-07466	8	9x12	40	300
YT-07467	10	9x12	44	300
YT-07468	11	9x12	41	300
YT-07469	12	9x12	49	300
YT-07470	13	9x12	56	300
YT-07471	14	9x12	52	300
YT-07472	15	9x12	52	300
YT-07473	16	9x12	54	300
YT-07474	17	9x12	59	280
YT-07475	18	9x12	56	280
YT-07476	19	9x12	65	220
YT-07477	21	9x12	71	220
YT-07478	22	9x12	74	220
YT-07479	13	14x18	130	120
YT-07480	14	14x18	123	120
YT-07481	15	14x18	128	120
YT-07482	16	14x18	133	120
YT-07483	17	14x18	135	120
YT-07484	18	14x18	134	120
YT-07485	19	14x18	138	120
YT-07486	21	14x18	144	100
YT-07487	22	14x18	145	100
YT-07488	24	14x18	153	100
YT-07489	27	14x18	162	100
YT-07490	30	14x18	182	80
YT-07491	32	14x18	181	80
YT-07492	34	14x18	210	80
YT-07493	36	14x18	203	80
YT-07494	41	14x18	240	60

**Insert reversible ratchet**

1/4" 3/8" 1/2" 3/4" CrV  
6140



YATO	Ⓞ	joint size	Ⓜ	📦
YT-07495	1/4" (6.3mm)	9x12	73	220
YT-07496	3/8" (9.5mm)	9x12	155	100
YT-07497	1/2" (12.7mm)	9x12	170	100
YT-07498	1/2" (12.7mm)	14x18	305	50
YT-07499	3/4" (19.0mm)	14x18	315	50

**Ring insert tool**

CrV  
6140



YATO	size(mm)	joint size	Ⓜ	📦
YT-07432	7	9x12	40	300
YT-07433	8	9x12	39	300
YT-07434	9	9x12	38	300
YT-07435	10	9x12	42	300
YT-07436	11	9x12	41	300
YT-07437	12	9x12	43	300
YT-07438	13	9x12	48	300
YT-07439	14	9x12	52	300
YT-07440	15	9x12	51	300
YT-07441	16	9x12	58	250
YT-07442	17	9x12	60	250
YT-07443	18	9x12	71	220
YT-07444	19	9x12	74	220
YT-07445	13	14x18	128	120
YT-07446	14	14x18	129	120
YT-07447	15	14x18	132	120
YT-07448	16	14x18	140	120
YT-07449	17	14x18	136	120
YT-07450	18	14x18	147	100
YT-07451	19	14x18	147	100
YT-07452	21	14x18	171	100
YT-07453	22	14x18	165	100
YT-07454	24	14x18	167	100
YT-07455	27	14x18	219	70
YT-07456	30	14x18	245	60
YT-07457	32	14x18	246	60
YT-07458	34	14x18	239	60
YT-07459	36	14x18	275	60
YT-07460	38	14x18	265	60
YT-07461	41	14x18	307	50

**Removable head for torque wrench**

1/4" RATCHET SYSTEM 6.3mm CrMo 42



YATO	Ⓞ	joint size	📦
YT-07870	1/4" (6.3mm)	9x12	220
YT-07871	3/8" (9.5mm)	9x12	100
YT-07872	1/2" (12.7mm)	9x12	100
YT-07873	1/2" (12.7mm)	14x18	50
YT-07874	3/4" (19.0mm)	14x18	50

**Labor save wrench**

1" 25mm 32.33mm 4200 Nm (max) I-1:3.8 II-1:58 CrV

BMC & COLOR SLEEVE



YATO	Ⓞ	Nm	L (mm)	📦
YT-0782	1" (25.4 mm)	4200	330	1

**Labor save wrench**

1" 25mm 32.33mm 5800 Nm (max) 1:66 CrV

BMC & COLOR SLEEVE



YATO	Ⓞ	Nm	L (mm)	📦
YT-07822	1" (25.4 mm)	5800	380	1