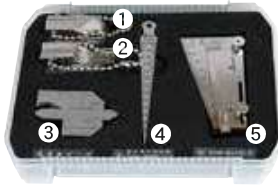


## Measuring Instrument Set for Steel Fabrication



97575



97794

Item Code	Description	Body Size (mm)	Weight (g)	JAN Code	Packing Unit	Package
97575	5 Items	234×195×40	870	4 960910 975750	1	
97794	7 Items	425×375×70	3,600	4 960910 977945	1	

(As a set)

Item Code	C.D.	Description	Example Usage
97784	6	①Bevel Angle Measuring Gauge 9 Leaves (30 - 50°)	Measuring oxygen cutting in manufacture process inspection, bevel angle inspection in beveling edge preparation
97786	0	②Route Interval Measuring Gauge 9 Leaves (4 - 12 mm)	Measuring oxygen cutting in manufacture process inspection, route side inspection in beveling edge preparation
* 58691	8	③Welding Gauge A	For various welding inspections such as leg length and reinforcement welding
* 62600	3	④Taper Gauge No.700A 1 - 15 mm	Measuring various gap spaces
* 58695	6	⑤Undercut Gauge	Measuring depth of overlay undercut
97788	4	⑥Joint Offset Measuring Gauge	Measuring joint offset
97790	7	⑦Flange Bend, Gradient Measuring Gauge	Measuring gap space of flange

\*Listed separately

### Features

- Convenient gauges for appraisal of steel fabrication are packed into handy kit. Helps to have better productivity and prevents loss.

### Use

- For accuracy confirmation of steel frames

### Specifications

#### ■ Case

	97575	97794
Material	Polypropylene resin	ABS resin

#### ■ Gauge

①Bevel Angle Measuring Gauge 9 Leaves (30 - 50°)



	97784
Material	Stainless steel
Accuracy	±1°
Pitch	2.5°
Body Size	30 × 65 × 18 mm
Weight	226 g

②Route Interval Measuring Gauge 9 Leaves (4 - 12 mm)



	97786
Material	Stainless steel
Accuracy	±0.1 mm
Pitch	1 mm
Body Size	20 × 65 × 18 mm
Weight	134 g

③Welding Gauge (Refer to P. 149)

④Taper Gauge (Refer to P. 154)

⑤Undercut Gauge (Refer to P. 149)

⑥Joint Offset Measuring Gauge



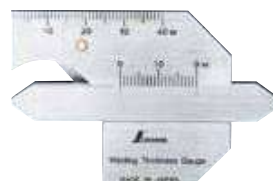
	97788
Material	Stainless steel
Accuracy	Gap of less than 0.5 mm
Body Size	65 × 230 × 35 mm
Weight	620 g

⑦Flange Bend Gauge



	97790
Material	Stainless steel
Accuracy	Straightness of less than 0.2 mm, squareness of less than 0.5 mm/140 mm
Body Size	217 × 335 × 12 mm
Weight	794 g

## Welding Gauge



58691

Item Code	Description	Body Size (mm)	Weight (g)	JAN Code	Packing Unit	Package
58691	A	70.5×48×7	85	4 960910 586918	5	

### Features

- Compact size convenient for carrying
- Able to measure easily, swiftly, and accurately

### Use

- For various welding inspections such as leg length and reinforcement welding

### Specifications

Accuracy	Gap /Length: Less than ±0.2 mm (in 20 mm, 40 mm) Angle: ±1.5° or less
Material	Stainless steel

## Undercut Gauge



58695

Item Code	Description	Body Size (mm)	Weight (g)	JAN Code	Packing Unit	Package
58695	Undercut Gauge	115×58×18	86	4 960910 586956	1	

### Features

- Stable foundation for easy readout

### Use

- For undercut depth measurement of weld overlay

### Specifications

Accuracy	±0,05 mm (1.0 mm or less)
Material	Stainless steel, brass, iron

## Crack Scale



58699



58697



58698  
Front Back

### Features

- Card and 15 cm rule models are made of stainless steel for rigidity and durability
- Clear model allows easy matching (or measuring) of cracks

### Use

- For inspection of concrete cracks in walls and foundations

### Specifications

	58699	58698	58697
Measuring Range	Clearance: 0.10 - 1.40 mm Length: 0 - 80 mm	Clearance: 0.10 - 2.20 mm Length: 0 - 150 mm	Clearance: 0.03 - 2.20 mm Length: 0 - 80 mm
Accuracy	±0.05 mm		±0.02 mm
Material	Stainless steel		Polyester

Item Code	Description	Body Size (mm)	Weight (g)	JAN Code	Packing Unit	Package
58699	Card Type	55×91×0.3	12			
58698	Rule Type 15 cm	175×15×0.5	10		10 (50)	
58697	Clear Type	55×91×0.2	1			

## Profile Gauge



77970

77971

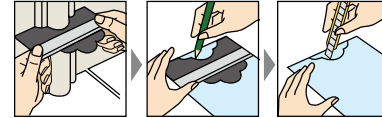
77984

### Features

- Gauge adapts to any shape
- Rust-resistant stainless steel pins

### Use

- For shaping the angles of carpets/mats and curves in wood or steel



Fit the item into the object

Draw a line along the shape

Cut the object along the line

### Specifications

	77970	77971	77984
Usable Range	Approx. 148 × 49 mm (width × depth)	Approx. 293 × 106 mm (width × depth)	Approx. 190 × 81 mm (width × depth)
Numbers of Strings	Approx. 185 pcs	Approx. 280 pcs	Approx. 195 pcs
String Size	φ0.8 × 84 mm	φ1.0 × 150 mm	φ1.0 × 120 mm
Material	Pins: Stainless steel		

Item Code	Description	Body Size (mm)	Weight (g)	JAN Code	Packing Unit	Package
77970	A 150 mm	150×84×18	230		6	
77971	B 300 mm	300×150×31	977		4	
77984	C 200 mm	203×120×22	465		5	

## Log Scriber



77590



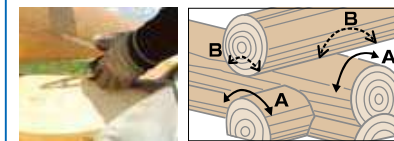
77597

### Features

- Essential compass for scribing to build a log house
- Works as double scriber by replacing the needle with a Scribe Ink Pencil
- Level on the front for better visibility when scribing
- Line drawn by a Scribe Ink Pencil is black and can be erased. If it gets wet, the line turns to blue and cannot be erased.
- Fine adjustment simple even after fixing scribe width

### Use

- For scribing around lumber when building a log house
- \*Scribe the roundness of lower log to upper log. Scribe on A with needle and draw a line to B by holding Double Scriber horizontally.



### Specifications

Material	Body: Stainless steel Level Body: ABS resin
Level	Sensitivity: 0.5 mm/m = ±0.0286° Accuracy: ±2.5 mm/m = less than ±0.1432°

Item Code	Description	Body Size (mm)	Weight (g)	JAN Code	Packing Unit	Package
77590	Log Scriber	250×55×70	350			
77597	Replacement Scribing Ink Pencil 2 pc-pack for Log Scriber	φ75×183	7		1	