

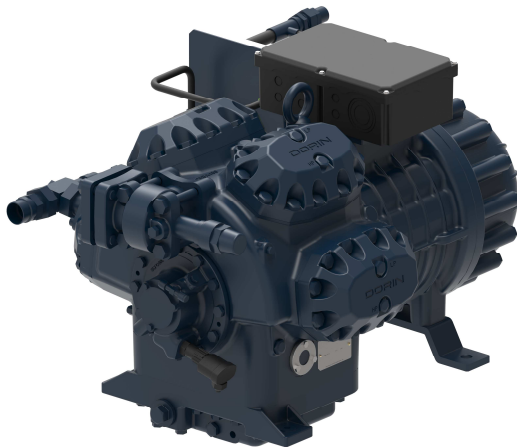


OFFICINE MARIO DORIN SINCE 1918

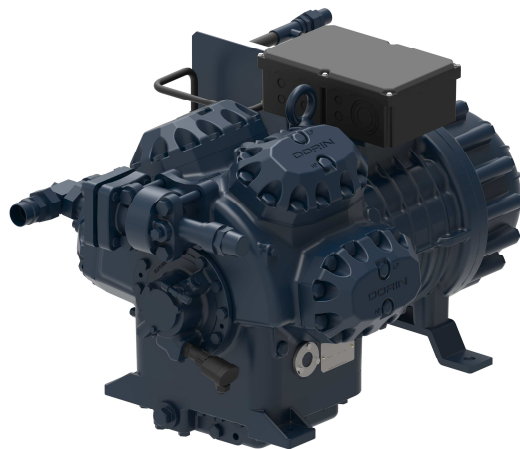
DORIN[®]
INNOVATION

DORIN 2S-H Two Stage Compressor Range:

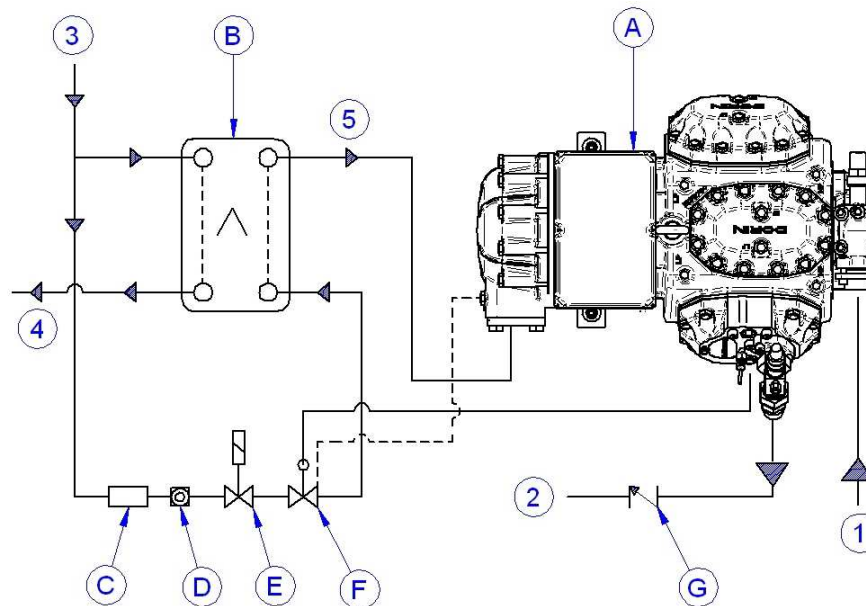
The Complete, Reliable and High-
Efficiency Answer for Low Evaporating
Temperature Applications



- New range of two stage compressors based on H Range platform
- Extremely quiet and smooth operation
- High COP levels
- Low sound emissions
- Extra-low pressure pulses
- Evaporating temperatures down to -75°C (R404A – R507)
- Factory assembled inter-cooler
- Wide range available - 17 models with displacement from $56,49 \text{ m}^3/\text{h}$ up to $183,58 \text{ m}^3/\text{h}$
- Motor power between 15 HP up to 60 HP
- Compact design



- **Optimized ratio between LP and HP volumes**
- **Innovative gas circulation**
- **External pipes are avoided**
- **Lower leakage rate – Less weak points**
- **Better efficiency**



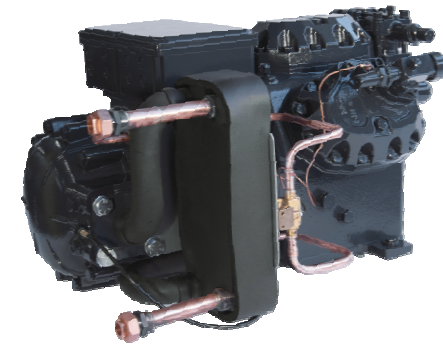
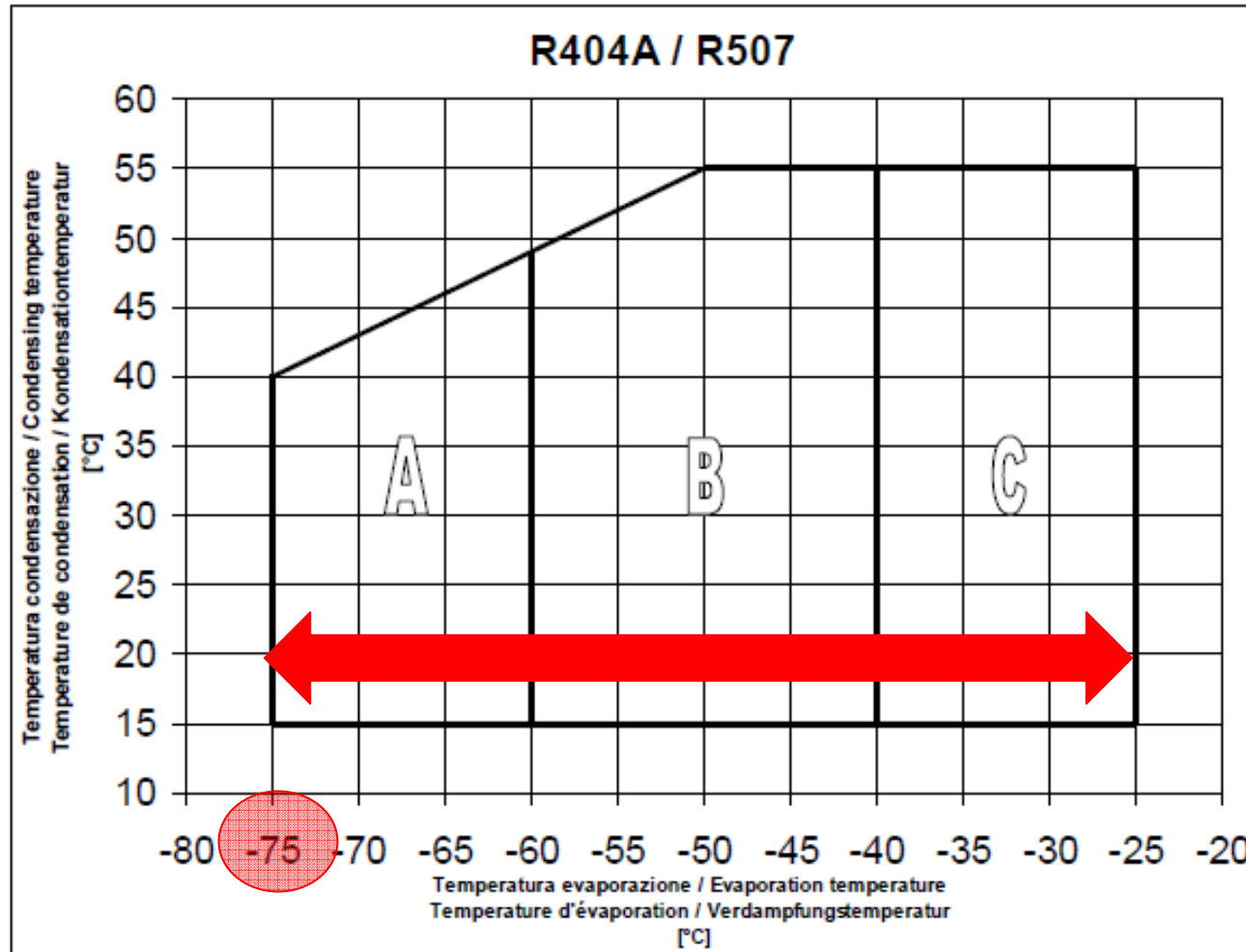
- A - Compressor
- B - Liquid Subcooler
- C - Filter
- D - Indicator
- E - Solenoid Valve
- F - Expansion Valve
- G - Non Return Valve

- 1 - From evaporator
- 2 - To condenser
- 3 - From liquid line
- 4 - To evaporator
- 5 - To II stage suction

2S-H series – Double Stage semi-hermetic compressors

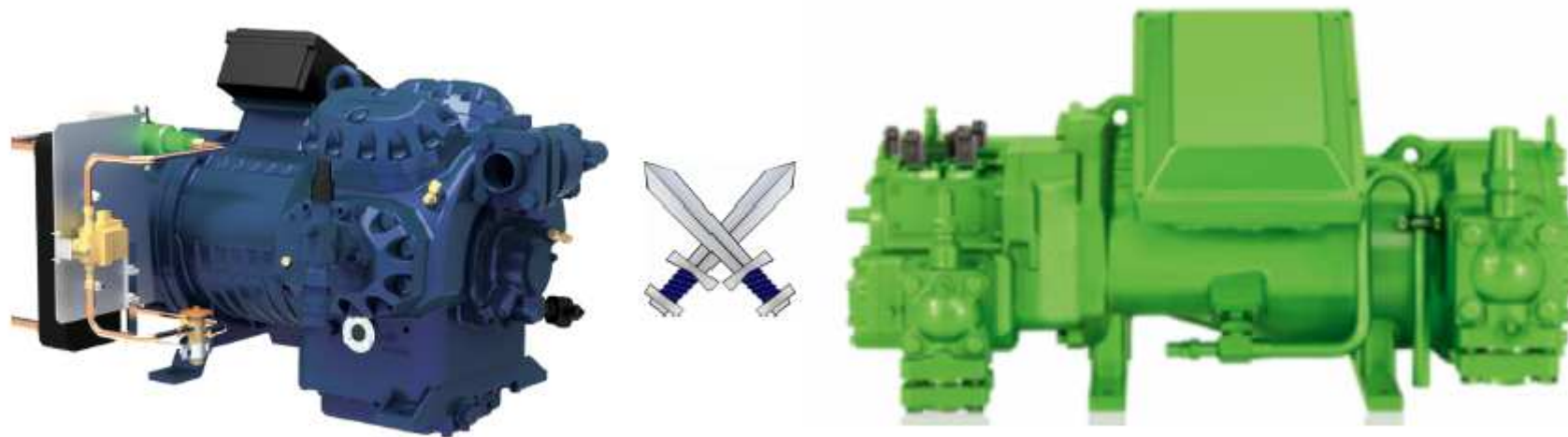


OFFICINE MARIO DORIN SINCE 1918
DORIN
INNOVATION





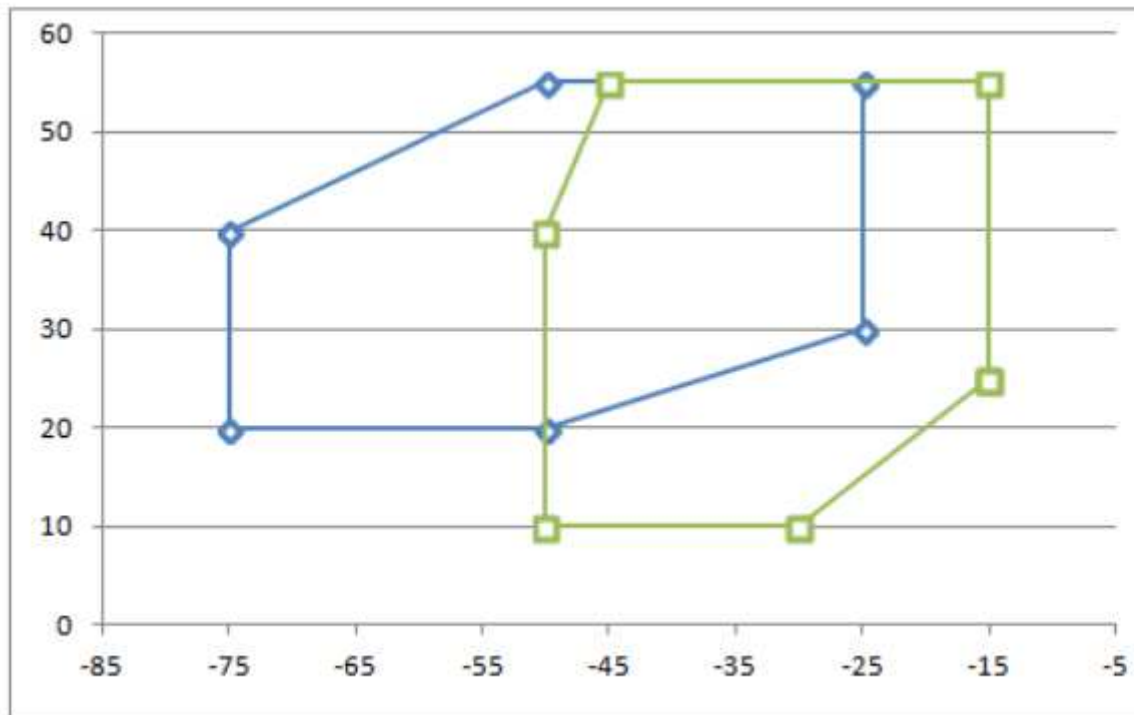
Large LT Applications Market is dominated by Screw Compressors
But with the new 2S-H Range DORIN is able to offer a much better COP alternative





Large 2S-H models are an alternative to the Screw compressors

Much Wider Application Envelope (R404A – R452A)





Large 2S-H models are an alternative to the Screw compressors

Much Better Performances (R404A – R452A)

DORIN R404A @ -45°C/+50°C				State-of-the-Art Screw Compressor	R404A @ -45°C/+50°C		
Sub-cooled Mode	Q	Pin	COP	Economised Mode	Q	Pin	COP
2S-H2000	14,1 Kw	13,1 Kw	1,03	"20 Hp"	12,3 Kw	26 Kw	0,47
2S-H2500	15,6 Kw	15,1 Kw	1,01	"25 Hp"	15,1 Kw	30 Kw	0,5
2S-H3000	18,5 Kw	18,4 Kw	1,01	"30 Hp"	18,9 Kw	35,1 Kw	0,54
2S-H4000	21,6 Kw	22 Kw	0,98	"40 Hp"	22,9 Kw	39,9 Kw	0,57
2S-H5000	26,7 Kw	22,8 Kw	1,17	"50 Hp"	26,7 Kw	46,6 Kw	0,57
2S-H6000	30,2 Kw	26,9 Kw	1,14	"60 Hp"	30,8 Kw	60,2 Kw	0,51
2S-H6500	32,7 Kw	29,4 Kw	1,11	"70 Hp"	36,1 Kw	62 Kw	0,58

2S-H series – Double Stage semi-hermetic compressors



OFFICINE MARIO DORIN SINCE 1918
DORIN
INNOVATION

Large 2S-H models are an alternative to the Screw compressors

Serie Range Serie Serie	Modello Model Modèle Typ	Temp. Cond. Cond. Temp. Temp. Cond. Kond. Temp. [°C]	Q [W]		Capacità frigorifera Refrigerating capacity Puissance frigorifique Kälteleistung						P [kW]		Potenza assorbita Power input Puissance absorbée Leistungsaufnahme	
					Temperatura evaporazione / Evaporating temperature Température d'évaporation / Verdampfungstemperatur [°C]									
			-25	-30	-35	-40	-45	-50	-55	-60	-65	-70	-75	
2S-H7	2S-H5000	30	Q	65,0	55,0	45,6	37,1	29,6	23,2	17,9	13,5	10,1	7,4	5,4
			P	29,5	27,3	24,9	22,5	20,1	17,7	15,6	13,5	11,7	10,0	8,6
		40	Q	59,7	51,1	42,8	35,0	28,1	22,1	17,1	12,9	9,7	7,1	
			P	33,1	30,1	27,2	24,3	21,5	18,9	16,4	14,2	12,2	10,5	
		50	Q	54,5	47,5	40,2	33,1	26,7	21,1	16,3	12,4	9,3		
			P	36,2	32,6	29,2	25,9	22,8	19,9	17,2	14,9	12,8		
	2S-H5000L 2S-H6000	30	Q	75,6	63,4	52,4	42,6	34,0	26,7	20,6	15,7	11,7	8,7	6,4
			P	35,1	32,4	29,5	26,6	23,7	21,0	18,4	16,0	13,9	12,0	10,5
		40	Q	69,0	58,7	49,0	40,1	32,2	25,4	19,7	15,0	11,3	8,4	
			P	39,2	35,7	32,1	28,7	25,4	22,3	19,5	16,9	14,7	12,7	
		50	Q	62,7	54,3	45,9	37,9	30,6	24,3	18,9	14,5	11,0		
			P	42,8	38,6	34,5	30,6	25,9	23,6	20,5	17,8	15,4		
	2S-H5500L 2S-H6500	30	Q	81,4	68,0	56,1	45,6	36,4	28,6	22,1	16,9	12,7	9,4	7,0
			P	38,4	35,4	32,2	29,0	25,9	22,9	20,1	17,5	15,3	13,3	11,7
		40	Q	74,0	62,8	52,3	42,8	34,4	27,2	21,1	16,2	12,3	9,2	
			P	42,8	38,9	35,1	31,3	27,7	24,4	21,3	18,6	16,2	14,1	
		50	Q	67,0	57,9	48,9	40,4	32,7	26,0	20,3	15,6	11,9		
			P	46,7	42,1	37,6	33,4	29,4	25,8	22,5	19,6	17,1		

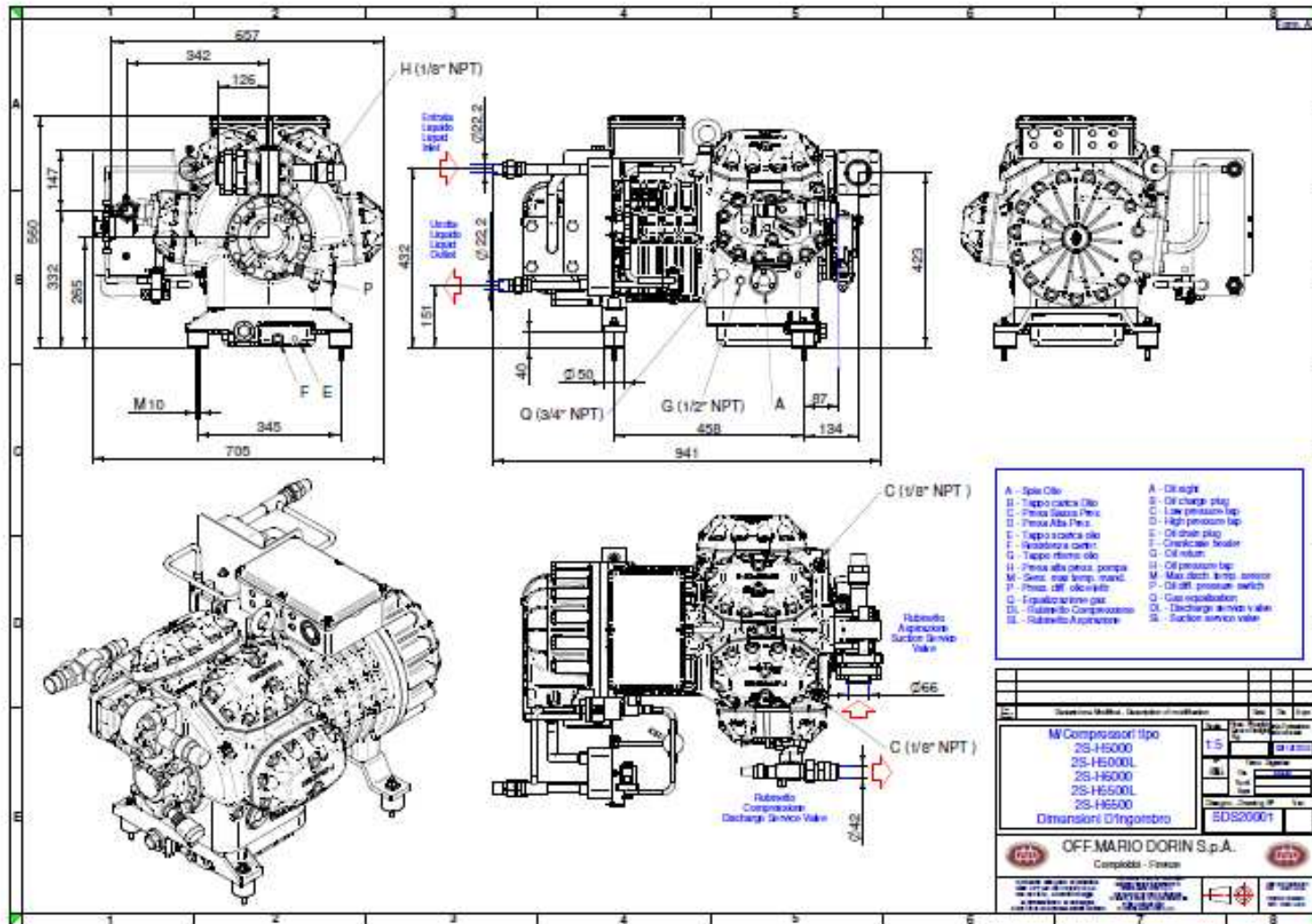
TENTATIVE DATA

Solo modelli standard

Solo modelli versione "L"



Large 2S-H models are an alternative to the Screw compressors



Large 2S-H models are an alternative to the Screw compressors

- **TWO STAGE COMPRESSORS DESIGN OFFER:**
- **MUCH HIGHER COPs**
- **MUCH LOWER SYSTEM COST:**
 - **COMPRESSORS ARE LESS EXPENSIVE**
 - **OIL SEPARATORS LESS EXPENSIVE**
 - **NO OIL COOLING IS NEEDED**
 - **PRE-MOUNTED ECONOMISER IS LESS EXPENSIVE**





OFFICINE MARIO DORIN SINCE 1918
DORIN[®]
INNOVATION

