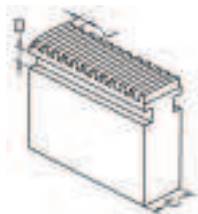


**GROUP 490 LATHE CHUCK JAWS**

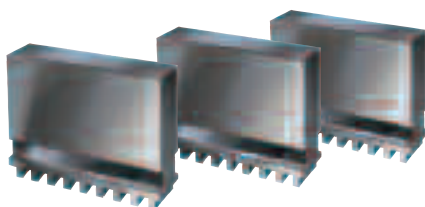
**KENNEDY Scroll Jaws**

**To Suit Pratt Burnard Chucks**  
For Standard, Super Precision, Griptru. All steel (type 78), Pratt Burnard old type (Inch) and Hardinge chucks.



Chuck Type	Jaw Code (Refer to Diameter)
Standard, Griptru, Super Precision	<b>B, C, E, G, J, M, P, Q, R</b>
All Steel (Type 78)	<b>L, O</b>
Burnard	<b>I, K, N</b>
Pratt Old Type	<b>H</b>
Hardinge/Pratt Type	<b>F</b>

**3 Jaw Sets**



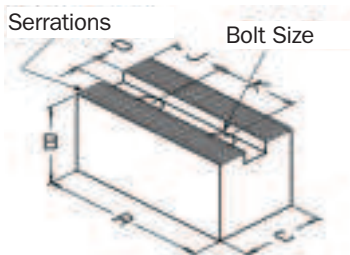
**4 and 6 jaw sets available on request**

Jaw Code	Chuck Diameter	Dimensions (mm)			Order Code
		C	D	J	<b>KEN-490</b>
EJC	100mm	14.10	4.85	5.08	<b>-1030K</b>
EJE	125mm	15.75	8.03	6.35	<b>-1050K</b>
EJF	125mm	14.10	4.85	6.35	<b>-1060K</b>
EJG	160mm	18.79	8.03	6.35	<b>-1070K</b>
EJJ	200mm	20.62	9.53	8.46	<b>-1100K</b>
EJL	230mm	25.40	9.52	8.46	<b>-1120K</b>
EJM	250mm	25.40	11.10	8.46	<b>-1130K</b>
EJP	315mm	28.19	12.88	8.46	<b>-1160K</b>

**Serrated Soft Jaws**

To suit metric serrated power chucks (Kitagawa/Howa/Matsumoto/Pratt Burnard/SMW/Autoblok etc.).

**3 Jaw Sets**

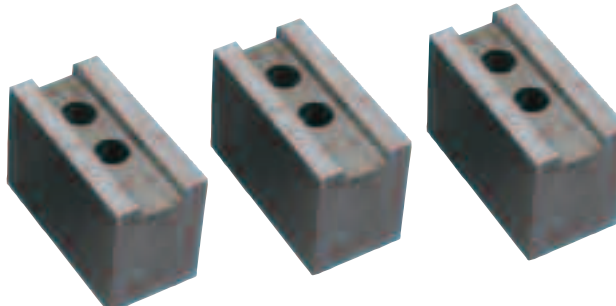
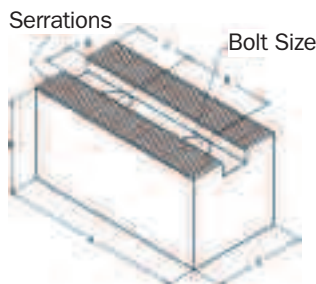


Jaw Code	Chuck Diameter	Dimensions (mm)				K/J Bolt	Serrations	Order Code
		A	B	C	D			<b>KEN-490</b>
BO06	165mm	72	38	32	12	20/15/M10	1.5mm x 60	<b>-5560K</b>
DJ06	165mm	72	57	32	12	20/15/M10	1.5mm x 60	<b>-5860K</b>
PT06	165mm	82	32	32	12	20/15/M10	1.5mm x 60	<b>-2060K</b>
BO08	210mm	95	44	32	14	25/25/M12	1.5mm x 60	<b>-5580K</b>
DJ08	210mm	95	70	32	14	25/25/M12	1.5mm x 60	<b>-5880K</b>
PT08	210mm	102	44	32	14	25/20/M12	1.5mm x 60	<b>-2080K</b>
BO10	254mm	110	40	40	16	30/30/M12	1.5mm x 60	<b>-5600K</b>
DJ10	254mm	110	80	40	16	30/30/M12	1.5mm x 60	<b>-5900K</b>
DK10	254mm	90	60	40	16	30/21/M12	1.5mm x 60	<b>-5970K</b>
PT10	254mm	125	40	40	16	30/30/M12	1.5mm x 60	<b>-2100K</b>
DK11	254mm	110	60	40	16	30/21/M12	1.5mm x 60	<b>-5980K</b>
BO12	315mm	130	50	50	18	30/40/M14	1.5mm x 60	<b>-5620K</b>
DJ12	315mm	130	80	50	18	30/40/M14	1.5mm x 60	<b>-5920K</b>
BR13	315mm	130	50	50	21	30/40/M16	1.5mm x 60	<b>-5700K</b>
DJ13	315mm	130	80	50	21	30/40/M16	1.5mm x 60	<b>-5930K</b>
BO15	380mm	165	76	64	22	43/37/M20	1.5mm x 60	<b>-5650K</b>
DJ15	380mm	165	127	64	22	43/37/M20	1.5mm x 60	<b>-5950K</b>
BO18	454/530/610mm	180	76	64	25	60/40/M20	3.0mm x 60	<b>-5660K</b>

**Serrated Soft Jaws**

To suit inch serrated power chucks (Berg/Forkardt/Rohm/Pratt Burnard/SMW/Autoblok etc.).

**3 Piece Set**

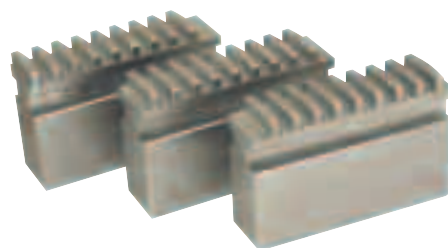


Jaw Code	Chuck Diameter	Dimensions (mm)				K/J Bolt	Serrations	Order Code
		A	B	C	D			<b>KEN-490</b>
BN90	165/200mm	90	60	40	17.0	22/15/M12	1/16" x 90	<b>-5090K</b>
BN12	250/315mm	120	80	50	21.0	28/20/M16	1/16" x 90	<b>-5120K</b>
BN23	400/500/630mm	155	89	64	25.5	35/30/M20	3/32" x 90	<b>-5230K</b>

**Scroll Jaws**

To suit Pratt Burnard metric chucks (Standard Accuracy and Super Precision).

**3 Jaw Sets**



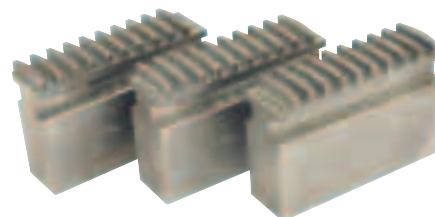
**4 and 6 jaw sets available on request**

Jaw Code	Chuck Diameter	Dimensions (mm)			Order Code
		C	D	J	<b>KEN-490</b>
EK16	160mm	18	7	6	<b>-6030K</b>
EK20	200mm	22	8	8	<b>-6040K</b>
EK25	250mm	25	8	8	<b>-6050K</b>
EK32	315mm	32	12	10	<b>-6060K</b>

**Soft Scroll Jaws**

To suit Indexa/Bison chucks.

**3 Jaw Sets**



Jaw Code	Chuck Diameter	Dimensions (mm)			Order Code
		C	D	J	<b>KEN-490</b>
EN08	80mm	11	6	4	<b>-6180K</b>
EN10	100mm	15	6	6	<b>-6200K</b>
EN13	125mm	20	8	7	<b>-6220K</b>
EN16	160mm	20	8	8	<b>-6230K</b>
EN20	200mm	25	10	8	<b>-6240K</b>
EN25	250mm	28	12	9	<b>-6250K</b>
EN32	315mm	32	12	10	<b>-6260K</b>