

GROUP 445 MACHINE VICES

SENATOR Drill Press Vice
QUALITY TOOLING



Suitable for use on pillar/bench drills to steady the workpiece in all light duty drilling applications for the garage or small workshop. Cast construction with machined slots which are spaced to fit all popular drill stand bases. Cross drilled handle with sliding T-bar for extra leverage.



Jaw Width	Maximum Opening	Jaw Height	Dimension Length x Height	Weight each	Order Code
75mm	55	23	200 x 45	1.90kg	-0750K
100mm	95	25	250 x 55	3.25kg	-1000K

WORKSHOP EQUIPMENT

ATLAS Machine Vices
WORKHOLDERS



Machine Vices without Swivel Base
Manufactured in accordance with high quality criteria. Designed for general purpose milling, planing and drilling applications.

Machine Vices with Swivel Base Type
Also available complete with a swivel base designed for milling, planing and drilling applications. Graduated to 1°.



Swivel Base Type

Jaws are fully ground in pairs

Jaw Width	Max. Opening	Jaw Height	Dimension L x W x H	Weight each	Order Code
-----------	--------------	------------	---------------------	-------------	------------

Without Swivel Base					
100mm	80	35	245 x 115 x 89	8kg	-0100K
160mm	125	51	411 x 187 x 120	34kg	-0150K
200mm	160	63	440 x 220 x 140	46kg	-0200K

With Swivel Base					
100mm	80	35	195 x 145 x 110	17kg	-1100K
160mm	125	51	411 x 187 x 167	43kg	-1150K
200mm	160	63	440 x 220 x 187	57kg	-1200K

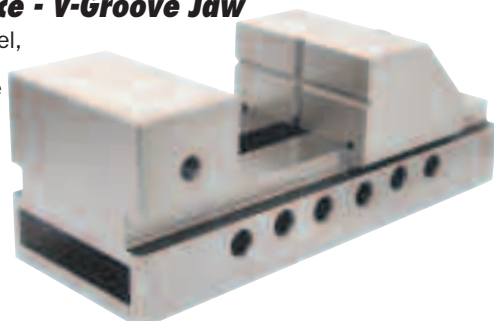
Spare Jaws to suit Atlas Machine Vices

Width	Order Code
100mm	-1040K
160mm	-1060K
200mm	-1080K

Toolmakers Vice - V-Groove Jaw

Made from alloy steel, case hardened. With a quick release mechanism.

Accuracy: 0.005mm.



Jaw Dimension Width x Opening x Height	Overall Length	Weight each	Order Code
50 x 65 x 25mm	135	3kg	-0310K

INDEXA Quick Grip Drill Press Vices



Fixed Jaw

Quick acting cam can be set instantly to hold work. Fixed jaw with V-block to handle flat or round pieces, vertically or horizontally. Jaw inserts are hardened and ground. The heavy base can be clamped down to a milling machine or drill press.



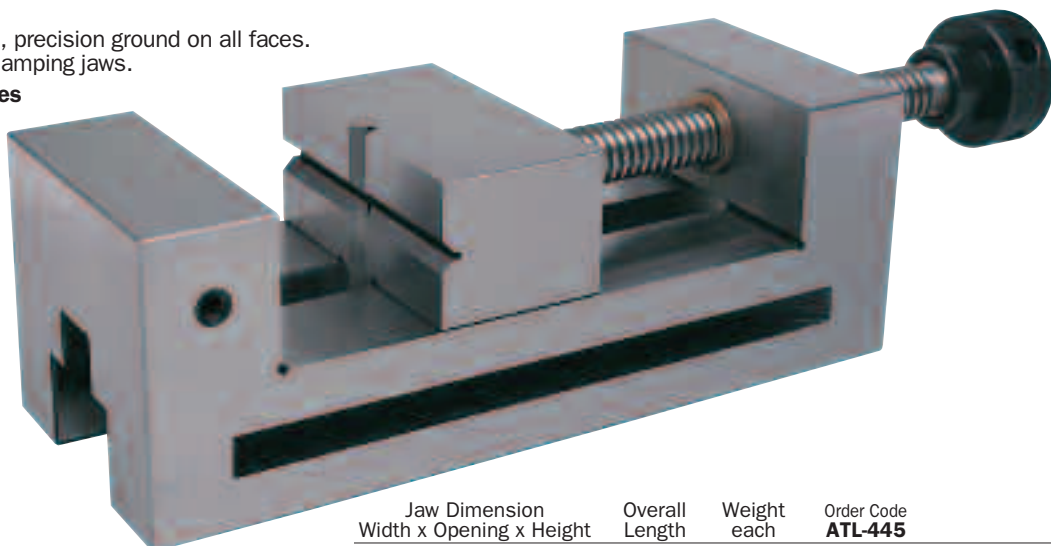
Jaw Width	Jaw Height	Maximum Opening	Weight each	Order Code
80mm	30mm	80mm	5.2kg	-0170K
100mm	35mm	100mm	8.9kg	-0180K

Toolmaker's Vices

Manufactured from high carbon steel, precision ground on all faces. Phosphor bronze bush, 90° vee on clamping jaws.

Standard Precision Toolmaker's Vices

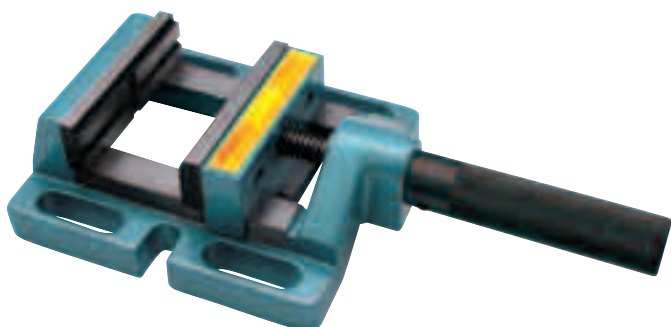
Squareness and parallelism to within **0.005mm**.



Jaw Dimension Width x Opening x Height	Overall Length	Weight each	Order Code
63 x 85 x 32mm	185	3.80kg	-2010K
100 x 125 x 45mm	255	13.00kg	-2050K

INDEXA Drill Press Vices

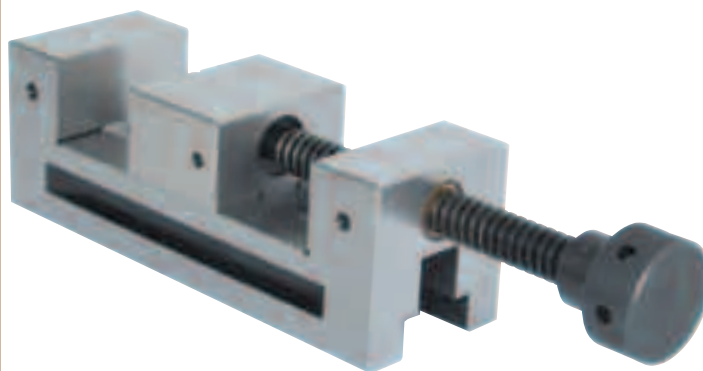
Available in four different jaw widths. For drilling, light milling, vertical and horizontal work. One grooved and one plain replaceable jaw for square and hexagonal shapes across flats or corners, thin strips and discs. Jaws and lead screw are hardened and ground.



Jaw Width	Jaw Opening	Order Code
85mm	70mm	-0010K
100mm	85mm	-0020K
120mm	120mm	-0030K
150mm	150mm	-0040K

Precision Toolmaker's Vices

Squareness and parallelism to within **0.003mm**. Designed for precision grinding and many other tool room applications.

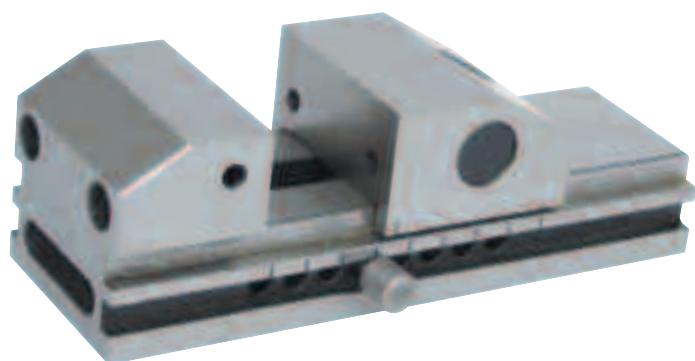


Jaw Dimension Width x Opening x Height	Overall Length	Weight each	Order Code
50 x 65 x 25mm	150	3.00kg	-0400K
73 x 100 x 35mm	205	5.00kg	-0430K
100 x 125 x 45mm	255	13.00kg	-0450K

Toolmaker's Vices - Plain Jaw

Manufactured from high quality alloy steel, case hardened to HRC 58 - 62. For wire cutting, machining, measurement and inspection. With a dowel pin quick release mechanism with linear scale for accurate alignment.

Accuracy: 0.003mm.

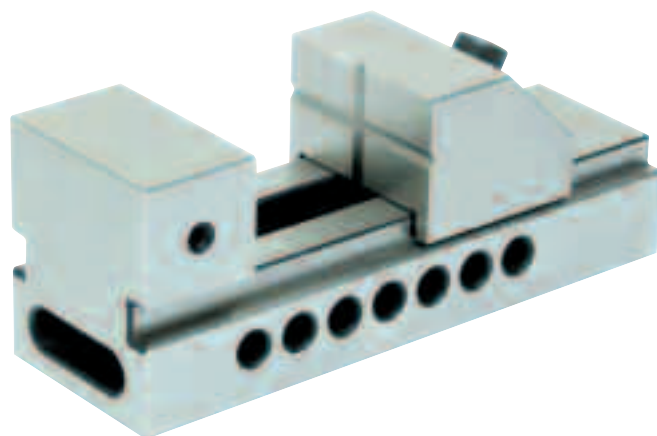


Jaw Dimension Width x Opening x Height	Overall Length	Weight each	Order Code
60 x 80 x 28mm	175mm	3.9kg	-0200K
75 x 100 x 40mm	220mm	7.9kg	-0210K

Toolmaker's Vice - V-Groove Jaw

Manufactured from high quality alloy steel, case hardened to HRC 58 - 62. With a rack quick release mechanism.

Accuracy: 0.003mm.



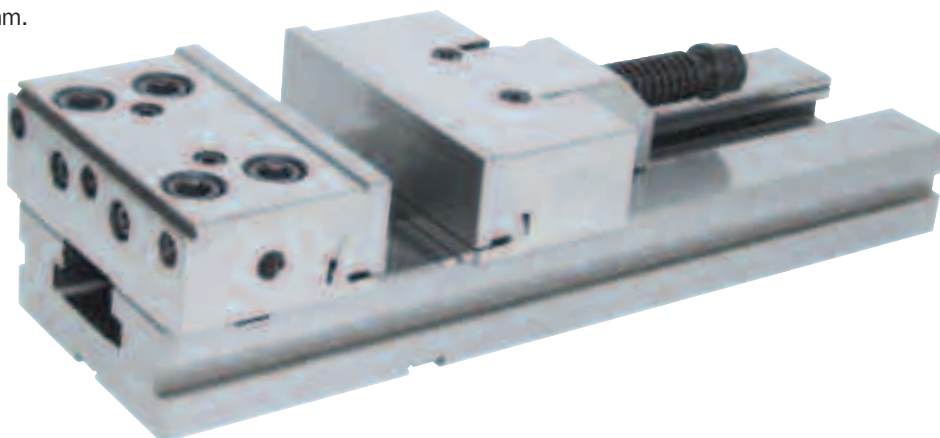
Jaw Dimension Width x Opening x Height	Overall Length	Weight each	Order Code
50 x 78 x 30mm	155mm	3.00kg	-0310K

Modular Precision Machine Vices

Precision modular vices are designed to be used on standard and CNC machines for precision grinding and milling. The vice could be set up individually or work in multiples, on tables or palletised components depending on the machined material dimensions. Made from hardened high grade alloy steel.

Perpendicular accuracy: 0.005mm.

Parallelism: 0.005mm.



Accessories:

L-wrench, T-wrench, vice holding clamp, work stop with main bolt, positioning key-nuts etc.

Jaw Width x Opening x Height	Overall Length	Clamping Force	Weight each	Order Code
100 x 100 x 30mm	270mm	3000kg	7.00kg	-0600K
125 x 150 x 40mm	345mm	3000kg	12.70kg	-0620K
150 x 200 x 50mm	420mm	5000kg	25.60kg	-0640K
150 x 300 x 50mm	520mm	5000kg	29.50kg	-0660K
200 x 300 x 65mm	595mm	8000kg	86.00kg	-0690K