

Vertical  
'V'  
Page 299

Push-Pull  
'P'  
Page 301

### Selection - Clamp Type

#### Vertical

For general application in automotive and other heavy industries where trouble free life and robust construction are required. Force applied downward, 90° to bar.

#### Horizontal

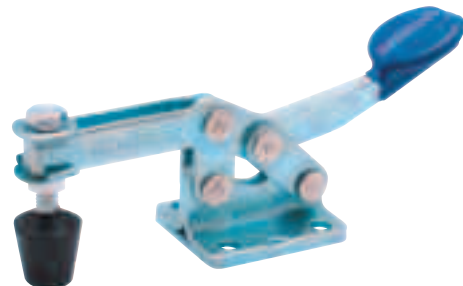
For general application in areas where a lower profile and unobstructiveness are required. Force applied downward, 90° to bar.

#### Push-Pull

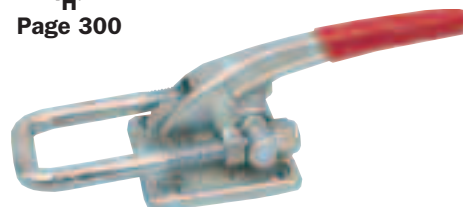
Clamps lock in extended and retracted positions. Force applied in line with spindle (straight line action).

#### Latch

Suitable for applications such as sealing chamber doors, lids of mould closures. Latch bolts are threaded to allow easy adjustment.

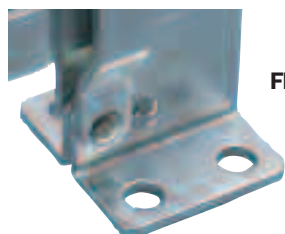
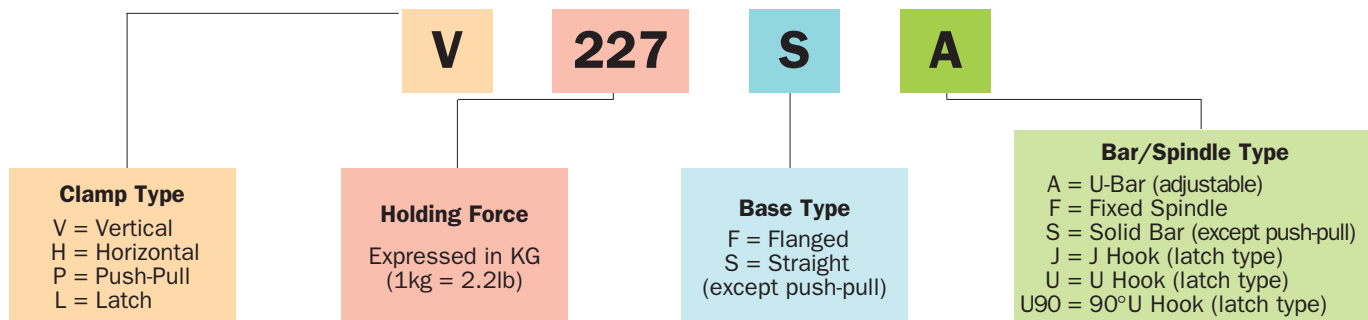


Horizontal  
'H'  
Page 300



Latch  
'L'  
Page 300

### Selection by Product Number



Flanged  
'F'

### Selection - Base Type

#### Flanged

Suitable for bolting or welding the clamp on to a flat surface.

#### Straight

Suitable for mounting on to an outside face or edge of workpiece.



Straight  
'S'

### Selection - Bar/Spindle Type

#### U-Bar

Clamping spindle can be adjusted along length of bar.

#### Fixed Spindle

Clamping spindle is in a fixed position on the arm.

#### Solid Bar

Clamping spindle and retainer are supplied loose to allow the arm to be cut to length and welded in desired position.

#### Threaded Spindle

Used for push-pull type of clamp.

#### U-Hook

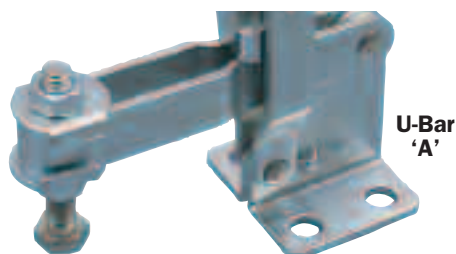
Threaded for easy adjustment.

#### J-Hook

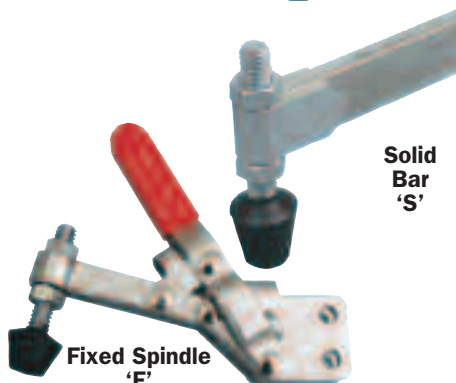
Locks directly regardless of angle of hook.

#### 90° U Hook

Locks at 90° to clamp.



U-Bar  
'A'

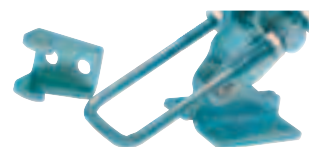


Solid Bar  
'S'

Fixed Spindle  
'F'



Threaded Spindle  
'handle position'



U-Hook  
'U'



90° U-Hook  
'U90'



J-Hook  
'J'

# INDEXA Vertical Industrial Toggle Clamp

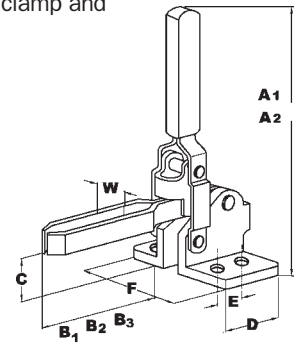


Designed to improve performance in fabrication and engineering clamping applications. The rapid clamping/unclamping made possible by the use of toggle clamps can greatly reduce machine/operator 'down-time' during all stages of production.

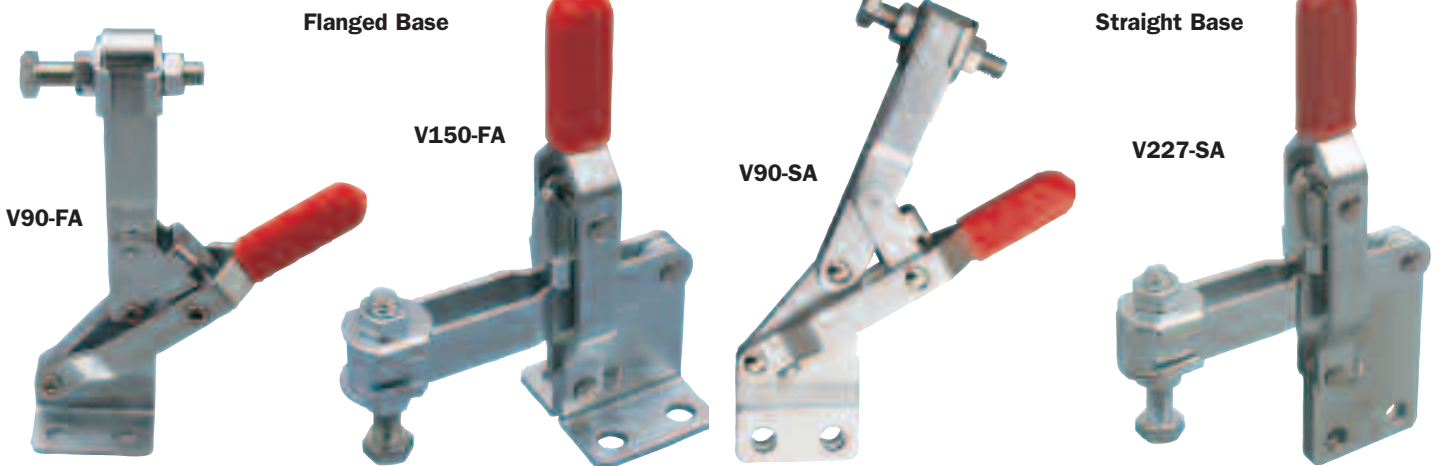
**Clamping Capacity** - the forces stated are the maximum loads that can be applied without causing permanent deformation. Due to leverage ratios, the holding capacity will be greatest at the point on the bar nearest to the handle of the clamp and forces stated have been achieved at this point.

## Vertical Clamp Dimensions (mm)

Holding Capacity	A1 Flanged Base	A2 Straight Base	B1 Adj. Bar	B2 Fixed Bar	B3 Solid Bar	C Flanged Base	D	E	F Flanged Base	W
50kg	75.0	83.8	24.5	—	—	19.0	25.4	15.9	33.3	5.2
90kg	95.2	107.1	33.2	33.2	—	23.0	25.4	12.7	39.7	6.4
150kg	139.0	160.0	63.0	—	—	38.0	43.0	33.0	50.0	11.0
227kg	139.7	154.0	71.4	—	57.2	31.8	34.9	31.8	46.0	8.3
300kg	285.0	330.0	120.0	—	—	50.0	60.0	30.0	77.0	13.5
450kg	225.4	257.5	125.4	—	—	50.8	50.8	31.8	64.2	13.5
550kg	304.8	352.4	153.0	—	153.0	82.6	76.2	50.8	95.2	16.7

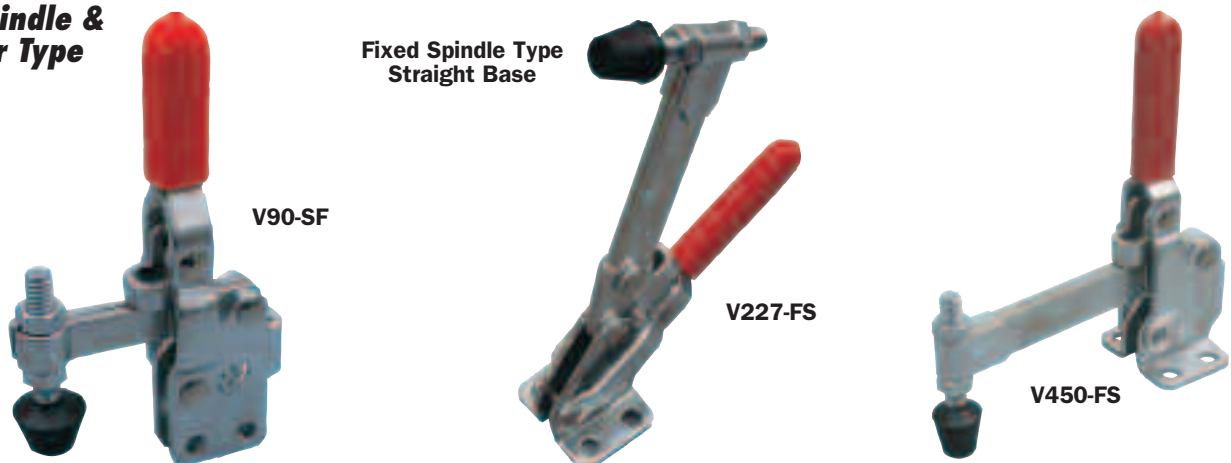


## 'U' Bar (Adjustable) Type



Product Number	Holding Capacity	Movement Handle	Bar	Base Type	Supplied With	Weight each	Order Code
V50-FA	50kg	56°	100°	Flanged	Tipped Spindle (No.10) and Flanged Washer	60g	<b>-1020K</b>
V90-FA	90kg	60°	100°		Spindle (1/4") and Flanged Washer	170g	<b>-1220K</b>
V150-FA	150kg	45°	94°		Hex Head Spindle (M8) and Bolt Retainer	320g	<b>-1320K</b>
V227-FA	227kg	60°	100°		Tipped Spindle (5/16") and Flanged Washer	355g	<b>-1420K</b>
V300-FA	300kg	67°	140°		Hex Head Spindle (M10)	1250g	<b>-1620K</b>
V450-FA	450kg	70°	135°		Hex Head Spindle (1/2") and Flanged Washer	1140g	<b>-1720K</b>
V550-FA	550kg	60°	140°	Straight	Hex Head Spindle (5/8") and Flanged Washer	2540g	<b>-1920K</b>
V340-FA	340kg	58°	105°		Tipped Spindle (3/8") and Flanged Washer	635g	<b>-1590K</b>
V90-SA	90kg	60°	100°		Spindle (1/4") and Flanged Washer	170g	<b>-1270K</b>
V150-SA	150kg	45°	94°		Hex Head Spindle (M8) and Bolt Retainer	320g	<b>-1370K</b>
V227-SA	227kg	60°	100°		Tipped Spindle (5/16") and Flanged Washer	355g	<b>-1470K</b>
V450-SA	450kg	70°	135°		Hex Head Spindle (5/8") and Flanged Washer	1250g	<b>-1770K</b>

## Fixed Spindle & Solid Bar Type

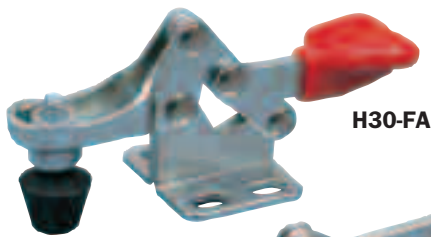


Product Number	Holding Capacity	Movement Handle	Bar	Base Type	Supplied With	Weight each	Order Code
V100-FF	90kg	60°	100°	Flanged	Fixed Spindle (1/4")	170g	<b>-1120K</b>
V90-SF	90kg	60°	100°	Straight	Fixed Spindle (1/4")	170g	<b>-1170K</b>
V227-FS	227kg	60°	100°	Flanged	Solid Bar Hex Head (5/16") and Bolt Retainer*	340g	<b>-1520K</b>
V450-FS	450kg	70°	135°		Solid Bar Hex Head Spindle (1/2") and Bolt Retainer*	1250g	<b>-1820K</b>
V550-FS	550kg	60°	140°		Solid Bar Hex Head Spindle (5/8") and Bolt Retainer*	2540g	<b>-1940K</b>
V227-SS	227kg	60°	100°	Straight	Solid Bar Tipped Spindle (5/16") and Bolt Retainer*	340g	<b>-1570K</b>
V450-SS	450kg	70°	135°		Solid Bar Hex Head Spindle (5/8") and Bolt Retainer*	1250g	<b>-1870K</b>

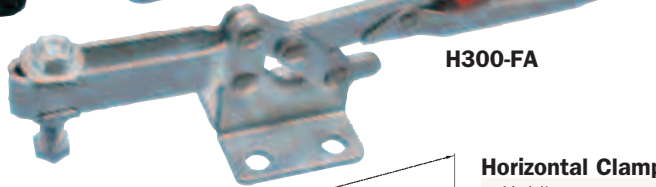
PRODUCTS ARE ONLY AVAILABLE VIA YOUR DISTRIBUTOR



With a low profile design suitable for use in applications requiring increased access to the actual workpiece. Available in eight sizes for general application in areas where a lower profile is required. Force applied downwards 90° to bar.



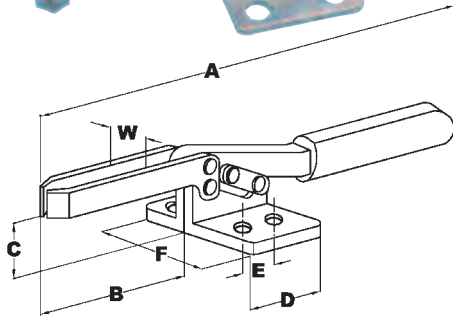
H30-FA



H300-FA



H340-FA



**Horizontal Clamp Dimensions (mm)**

Holding Capacity	A	B	C	D	E	F	W
30kg	76.5	28.0	12.5	24.0	11.5	28.5	8.5
90kg	138.0	55.0	25.4	37.0	25.4	36.0	7.4
227kg	168.0	70.0	34.9	38.0	25.4	35.0	8.3
300kg	270.0	85.0	36.5	58.0	34.0	60.0	11.0
340kg	262.0	107.5	46.9	57.1	41.3	57.2	11.0
400kg	240.0	60.0	54.0	70.0	42.0	50.0	12.6
500kg	270.0	91.2	38.0	58.0	37.0	70.0	11.0
636kg	272.0	76.2	51.0	90.0		48.0	12.7

Product Number	Holding Capacity	Movement Handle	Bar	Base Type	Supplied with	Weight each	Order Code
H65-FA	75kg	76°	94°	Flanged	Hex Head Spindle (M5) Moulded PVC Handles	100g	<b>-1960K</b>
H86-FA	150kg	76°	94°		Hex Head Spindle (M6) Moulded PVC Handles	230g	<b>-1970K</b>
H217-FA	250kg	76°	94°		Hex Head Spindle (M8) Moulded PVC Handles	430g	<b>-1980K</b>
H30-FA	30kg	88°	80°		Tipped Spindle (M4)	40g	<b>-2020K</b>
H90-FA	90kg	60°	85°		Tipped Spindle (1/4") and Flanged Washer	130g	<b>-2120K</b>
H227-FA	227kg	65°	90°		Tipped Spindle (5/16") and Flanged Washer	255g	<b>-2220K</b>
H300-FA	300kg	85°	80°		Hexagon Head Spindle (3/8") and Flanged Washer	490g	<b>-2320K</b>
H340-FA	340kg	50°	85°		Tipped Spindle (3/8") and Flanged Washer	640g	<b>-2420K</b>
H400-FA	400kg	85°	84°	Flanged	Tipped Spindle (3/8") and Flanged Washer	600g	<b>-2520K</b>
H500-FA	500kg	85°	65°		Hexagon Head Spindle (M10) and Flanged Washer	450g	<b>-2620K</b>
H636-FA	636kg	94°	91°		Hexagon Head Spindle (1/2") and Flanged Washer**	1220g	<b>-2720K</b>

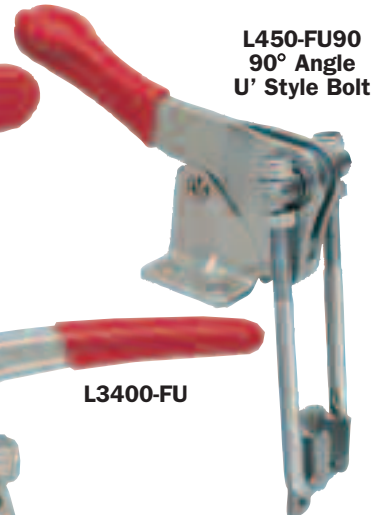
\*\*Single mounting centre hole 13mm diameter for 'Tee' bolt mounting

## Latch Type Toggle Clamp

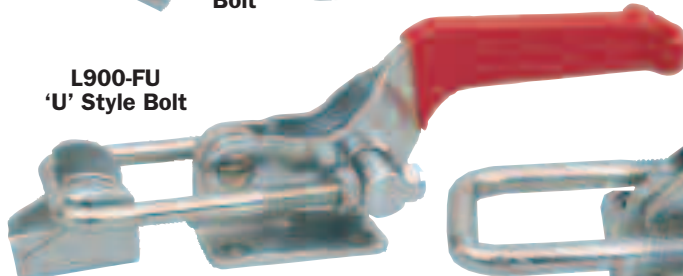
Suitable for sealing chamber doors or mould closures. The latched bolts are threaded to allow easy adjustment and provide positive connection with latch plate.



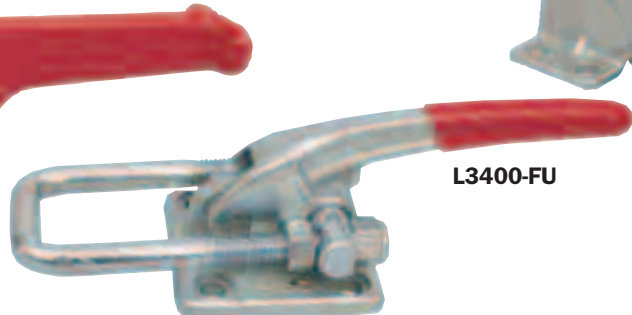
L170-FJ  
'J' Style Bolt



L450-FU90  
90° Angle  
U' Style Bolt



L900-FU  
'U' Style Bolt



L3400-FU



Group  
**732**

\*Optional latch plate **IND-443-8000K**

Product Number	Holding Capacity	Drawing Movement	Drawing Adjust	Base Type	Description	Weight each	Order Code
L164-FU	164kg	30mm	9.9mm	Flanged	U-Style Bolt	80g	<b>-4070K</b>
L318-FU	318kg	45mm	9.6mm		U-Style Bolt	225g	<b>-4010K</b>
L900-FU	900kg	80mm	23.8mm		U-Style Bolt	680g	<b>-4130K</b>
L1818-FU	1818kg	88.9mm	19mm		U-Style Bolt*	1260g	<b>-4170K</b>
L3400-FU	3400kg	55.6mm	28.6mm		U-Style Bolt*	1480g	<b>-4210K</b>
L170-FJ	170kg	100mm	6.5mm	Flanged	J-Style Bolt	270g	<b>-4030K</b>
L170-FJ	170kg	105mm	35mm		J-Style Bolt	255g	<b>-4050K</b>
L340-FJ	340kg	140mm	40mm		J-Style Bolt	340g	<b>-4190K</b>
L225-FU90	225kg	25mm	15mm	Flanged	90° Angle U-Style Bolt	113g	<b>-4090K</b>
L450-FU90	450kg	65mm	33mm		90° Angle U-Style Bolt	250g	<b>-4110K</b>
L900-FU90	900kg	45mm	40mm		90° Angle U-Style Bolt	700g	<b>-4150K</b>

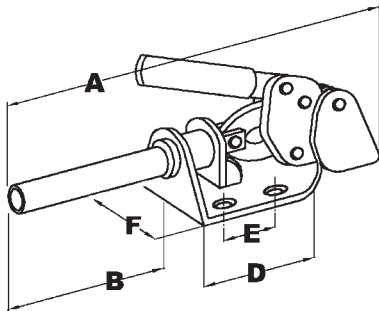
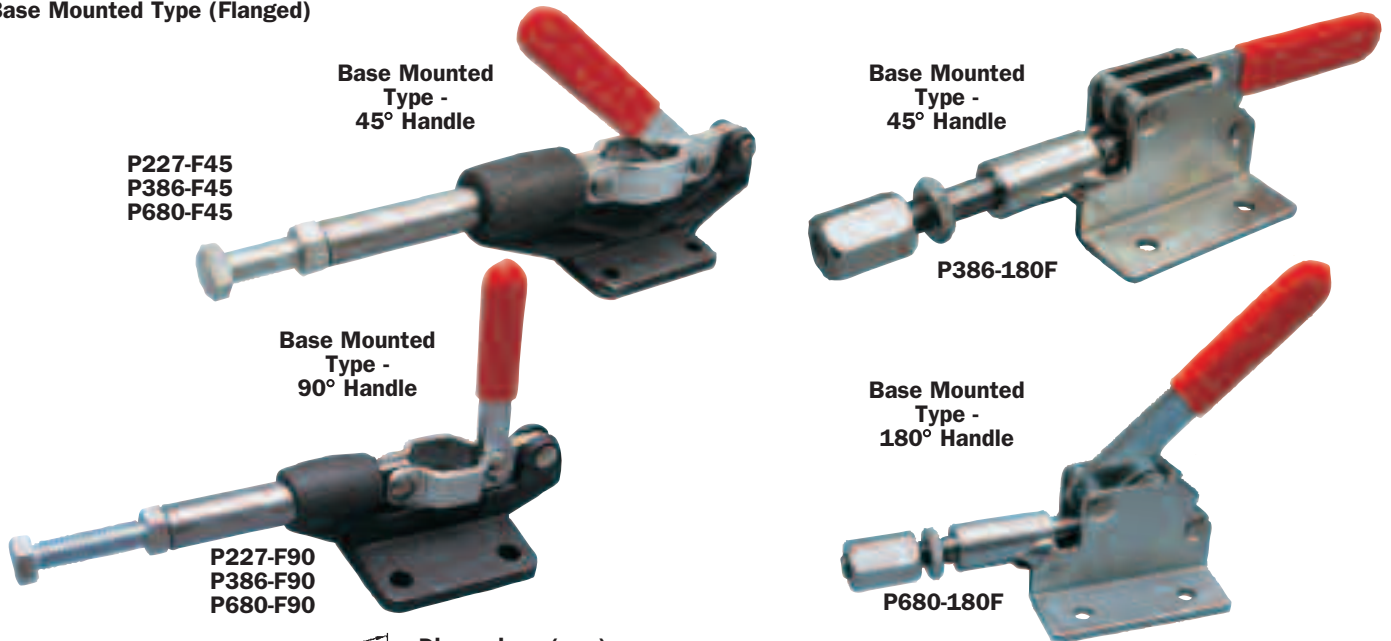


# INDEXA Push Pull Industrial Toggle Clamp



The straight line action which gives these plunger-style clamps extremely high loading capacities whilst maintaining compactness. These clamps also lock in the open position which allows a 'pull' to be exerted (for instance, in use with foam moulds). All models have tapped spindles for use with adjustable spindles.

## Base Mounted Type (Flanged)

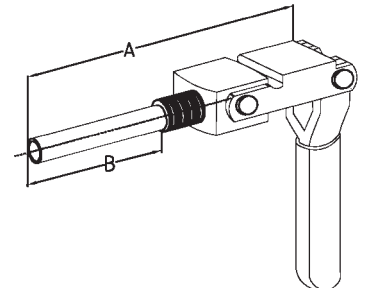
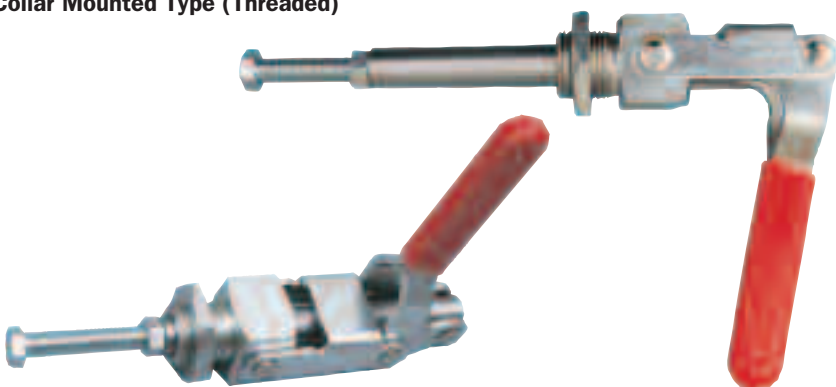


### Dimensions (mm)

Holding Capacity	A – Excluding Handle	B	C	D	E	F
45kg	72.2	38.9	9.5	33.3	15.0	27.0
50kg	71.9	16.9	13.0	49.0	24.0	42.0
136kg	138.0	47.0	24.6	48.0	35.0	56.0
160kg	146.0	76.0	15.5	70.0	40.0	72.0
200kg	124.5	41.5	14.0	48.0	40.0	50.0
227kg	125.4	52.4	19.0	52.4	35.0	57.2
295kg	204.0	112.0	17.7	92.0	60.0	83.0
386kg	158.8	81.0	23.8	58.8	41.4	57.2
680kg	238.2	120.8	35.0	73.2	50.8	71.4
1136kg	178.6	50.8	12.5	127.8	34.9	56.2
1136kg	178.6	50.8	12.5	127.8	41.3 (6 holes)	56.2
1600kg	310.0	87.0	47.0	227.0	80.0	107.0

Product Number	Holding Capacity	Spindle Thread	Handle Movement	Handle Position	Base Type	Supplied With	Weight each	Order Code
P45-F45	45kg	1/4" UNC x 12 Deep	190°			Nylon Spindle	50g	<b>-3030K</b>
P136-F45	136kg	M8	180°			Hexagon Head Spindle	300g	<b>-3060K</b>
P200-F45	180kg	M8 x 1.25	144.5°			Hexagon Head Spindle	345g	<b>-3090K</b>
P180-FA	180kg	M8 x 1.25	145°	45°	Flanged	Hexagon Head Spindle	35g	<b>-3100K</b>
P227-F45	227kg	M8	180°	Extended	Flanged	Hexagon Head Spindle	340g	<b>-3120K</b>
P386-F45	386kg	M10	180°			Hexagon Head Spindle	580g	<b>-3180K</b>
P680-F45	680kg	M12	180°			Hexagon Head Spindle	1480g	<b>-3240K</b>
P1136-F45	1136kg	M10	180°			Hexagon Head Spindle	935g	<b>-3300K</b>
P227-F90	227kg	M8 x 30 Deep	180°	90°	Flanged	Hexagon Head Spindle	340g	<b>-3150K</b>
P386-F90	386kg	M10 x 40 Deep	180°	Extended	Flanged	Hexagon Head Spindle	580g	<b>-3210K</b>
P680-F90	680kg	M12 x 50 Deep	180°			Hexagon Head Spindle	1480g	<b>-3270K</b>
P50-180F	50kg	M5	66°	180°	Flanged	Hexagon Head Spindle	100g	<b>-3700K</b>
P386-180F	160kg	M10	45°	Extended	Flanged	Hexagon Head Spindle	454g	<b>-3730K</b>
P680-180F	295kg	1/2" UNC	45°			Hexagon Head Spindle	1270g	<b>-3760K</b>

## Collar Mounted Type (Threaded)



### Dimensions (mm)

Holding Capacity	A – Excluding Handle	B
91kg	30.3	20.6
136kg	115.0	37.7
318kg	169.5	65.3

Product Number	Holding Capacity	Spindle Thread	Collar Thread	Handle Movement	Base Type	Supplied with	Weight each	Order Code
P91-FT	91kg	1/4" UNC	M16	180°		Nylon Spindle	113g	<b>-3530K</b>
P136-FT	136kg	5/16" UNC	M20	180°	Flanged	Hexagon Head Spindle	270g	<b>-3560K</b>
P318-FT	318kg	3/8" UNC	M27	180°		Hexagon Head Spindle	690g	<b>-3590K</b>

**PRODUCTS ARE ONLY AVAILABLE VIA YOUR DISTRIBUTOR**

Designed to improve performance in fabrication and engineering clamping applications. The rapid clamping/unclamping made possible by the use of toggle clamps can greatly reduce machine/operator 'down-time' during all stages of production.



AV200-FA

'U' Bar  
(Adjustable) Type  
with Flanged  
Base

AV217-FA

AV50-FA

'U' Bar  
(Adjustable) Type  
with Side Facing  
Flanged Base

AV90-FA



AV150-FA

Group  
732

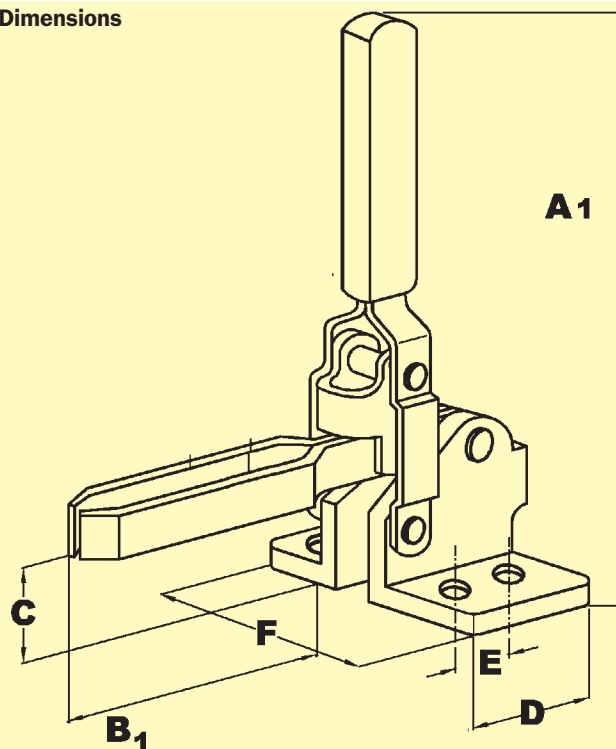
AV450-FA

Fixed  
Spindle  
Type  
with  
Flanged  
BaseSolid Bar  
Type  
with  
Flanged  
Base

AV217-FS

AV80-FF

## Dimensions



## 'U' Bar (Adjustable) Type with Flanged Base

Product Number	A <sub>1</sub> Flanged Base	B <sub>1</sub> Flanged Base	C Flanged Base	D	E	F Flanged Base
AV50-FA	75.0	24.5	19.0	25.4	15.9	39.7
AV90-FA	93.0	39.0	23.0	29.0	14.0	28.0
AV150-FA	143.0	44.0	31.0	19.0	12.7	42.0
AV200-FA	139.0	63.0	38.0	43.0	24.0	50.0
AV217-FA	139.7	71.4	31.8	34.9	19.0	46.0
AV450-FA	272.0	125.0	62.0	70.0	40.0	70.0

## Fixed Spindle Type with Flanged Base

Product Number	A <sub>1</sub> Flanged Base	B <sub>1</sub> Flanged Base	C Flanged Base	D	E	F Flanged Base
AV80-FF	100.0	27.0	23.8	25.4	12.7	39.7
AV217-FS	139.7	57.2	31.8	34.9	19.0	46.0

## 'U' Bar (Adjustable) Type with Flanged Base

Product Number	Holding Capacity	Movement Handle	Bar	Base Type	Supplied With	Weight each	Order Code
AV50-FA	50kg	56°	100°	Flanged	Tipped Spindle (M5) and Flanged Washers	60g	-1020K
AV90-FA**	90kg	60°	100°		Spindle (M6) and Bolt Retainer	115g	-1220K
AV150-FA	150kg	70°	108°		Hex Head Spindle (M6) Moulded PVC Handle	230g	-1970K
AV200-FA	200kg	45°	94°		Hex Head Spindle (M8) and Flanged Washers	370g	-1320K
AV217-FA	217kg	60°	100°		Tipped Spindle (M8) and Flanged Washers	310g	-1420K
AV450-FA	450kg	70°	135°		Hex Head Spindle (M12) and Flanged Washers	1220g	-1720K

\*\* Model AV90-FA has Side Flange - All other FA models listed have Flat Flanges

## Fixed Spindle Type with Flanged Base

Product Number	Holding Capacity	Movement Handle	Bar	Base Type	Supplied With	Weight each	Order Code
AV80-FF	90kg	60°	100°	Flanged	Fixed Spindle (M8)	170g	-1120K
AV217-FS	217kg	60°	100°		Solid Bar and Bolt Retainer (M8)*	310g	-1520K

\*Please note that the bolt retainer supplied needs to be welded in to position by the user

With a low profile design suitable for use in applications requiring increased access to the actual workpiece. Available in eight sizes for general application in areas where a lower profile is required. Force applied downwards 90° to bar.



**'U' Bar (Adjustable) Type with Flanged Base**

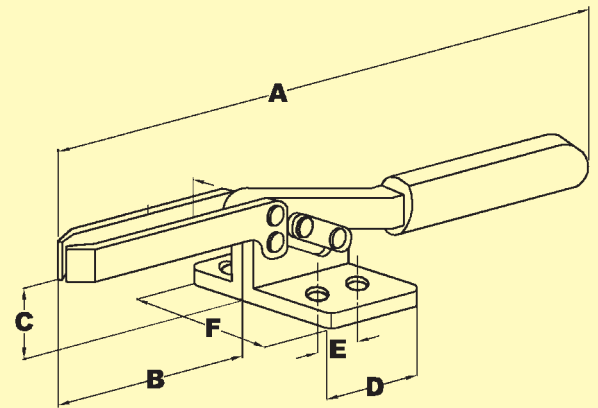
**AH250-FA**

**AH20-FA**

**AH340-FA**

**AH80-FA**

**Dimensions**



Product Number	A	B	C	D	E	F
AH20-FA	110.0	37.5	24.8	36.5	24.0	30.0
AH80-FA	138.1	55.0	25.4	36.5	25.4	38.0
AH217-FA	168.0	70.0	34.9	38.0	53.4	35.0
AH250-FA	274.0	108.0	45.0	59.0	41.2	59.0
AH340-FA	263.5	108.0	44.4	57.2	41.3	57.2

Product Number	Holding Capacity	Movement Handle	Bar	Base Type	Supplied with	Weight each	Order Code
AH20-FA	30kg	88°	80°	Flanged	Tipped Spindle (M6) and Flanged Washers	100g	<b>-2020K</b>
AH80-FA	80kg	60°	85°		Tipped Spindle (M6) and Flanged Washers	130g	<b>-2120K</b>
AH217-FA	217kg	65°	90°		Tipped Spindle (M8) and Flanged Washers	312g	<b>-2220K</b>
AH250-FA	250kg	94°	76°		Hexagon Head Spindle (M10) and Flanged Washers	500g	<b>-2620K</b>
AH340-FA	340kg	50°	85°		Tipped Spindle (M10) and Flanged Washers	265g	<b>-2420K</b>

### Latch Type Toggle Clamps

Suitable for sealing chamber doors or mould closures. The latched bolts are threaded to allow easy adjustment and provide positive connection with latch plate.

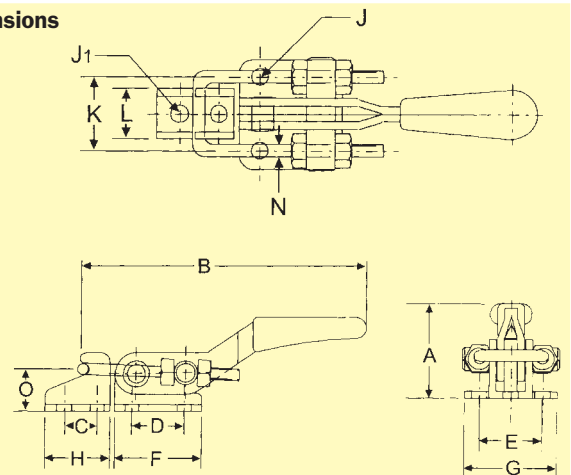
**AL165-FU**

**AL320-FU**

**'U' Style Bolt Type with Flanged Base**

**AL900-FU**

**Dimensions**



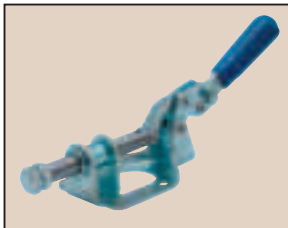
Product Number	A	B	C	D	E	F	G	H	J	J1	K	L	N	O
AL165-FU	36	88	9.9	16	19	26	28	45	4.3	4.3	19	13.2	3.3	12
AL320-FU	45	151.6	14	19	31.8	39.6	44.5	25	6.8	6.8	25.4	17.5	4	17
AL900-FU	70.6	190	19	41.4	38	60.5	54	38	8.4	8.4	44.5	30.0	8	24

Product Number	Holding Capacity	Drawing Movement	Drawing Adjust	Base Type	Description	Weight each	Order Code
AL165-FU	165kg	30mm	9.9mm	Flanged	U-Style Bolt	68g	<b>-4070K</b>
AL320-FU	320kg	45mm	9.6mm		U-Style Bolt	225g	<b>-4010K</b>
AL900-FU	900kg	80mm	23.8mm		U-Style Bolt	650g	<b>-4130K</b>

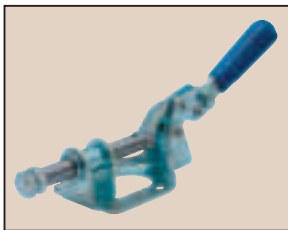
**PRODUCTS ARE ONLY AVAILABLE VIA YOUR DISTRIBUTOR**



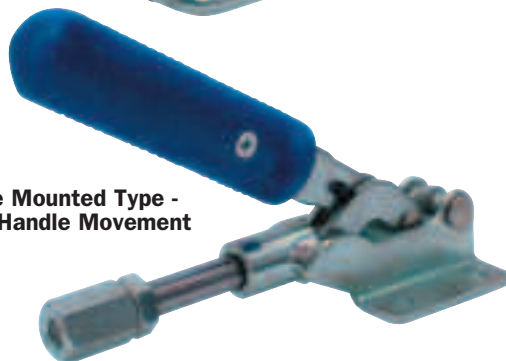
The straight line action gives these plunger-style clamps extremely high loading capacities whilst maintaining compactness. These clamps also lock in the open position which allows a 'pull' to be exerted (for instance, in use with foam moulds). All models have tapped spindles for use with adjustable spindles.



**Base Mounted Type -  
180° Handle**

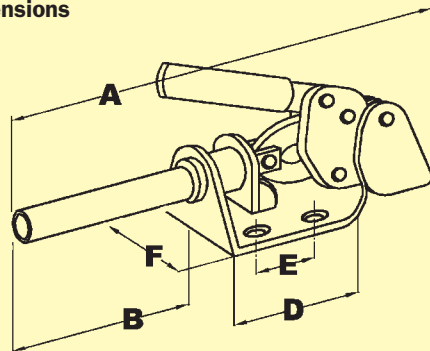


**Base Mounted Type -  
190° Handle Movement**



**Base Mounted Type -  
150° Handle  
Movement**

**Dimensions**



Product Number	A - Excl. Handle	B	C	D	E	F
AP136	138.1	49.2	24.6	88.9	34.9	55.6
AP200	124.5	41.5	14.0	83.0	40.0	50.0
AP227	151.0	63.0	15.0	88.0	32.0	63.0

Product Number	Holding Capacity	Spindle Thread	Handle Movement	Handle Position	Base Type	Supplied With	Weight each	Order Code
AP136	136kg	M8	180°			Hexagon Head Spindle	285g	<b>-3060K</b>
AP200	200kg	M8 x 1.25	150°	45°	Flanged	Hexagon Head Spindle	330g	<b>-3090K</b>
AP227	227kg	M8 x 30 Deep	190°	Extended		Hexagon Head Spindle	540g	<b>-3150K</b>

**INDEXA**

**Heavy Duty Weldable  
Toggle Clamps**

Hold down action suitable for high production automotive type applications. Heavy duty forged components with hardened and ground pivot points. The users provide their own handle and bar and weld them to the clamp which is then welded to a base. The flexible mounting of these clamps allows them to be used in situations where standard clamps are not effective.



**EXTENDED  
RANGE**

Holding Capacity	Base Width	Clamp Height with Handle	Weight each	Order Code
700kg	28mm	110mm	808g	<b>-5010K</b>
700kg	45mm	130mm	915g	<b>-5030K</b>
1100kg	50mm	170mm	1574g	<b>-5070K</b>
2200kg	63mm	205mm	2881g	<b>-5110K</b>

**Latch Plates**

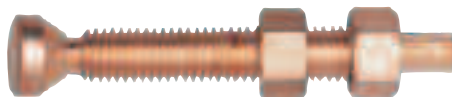
For use with latch type toggle clamps.



Base Size	Hook Width	Order Code
80 x 55mm	22mm	<b>IND-443 -8000K</b>

**Swivel Foot Spindles**

As Neoprene capped but suitable for clamping onto irregular shapes or angled workpieces.



Size	Length	Weight each	Order Code
1/4" UNC	2 1/4"	18g	<b>-8500K</b>
5/16" UNC	2 3/4"	31g	<b>-8520K</b>
3/8" UNC	3"	47g	<b>-8540K</b>
1/2" UNC	4"	115g	<b>-8560K</b>

**Neoprene Caps**

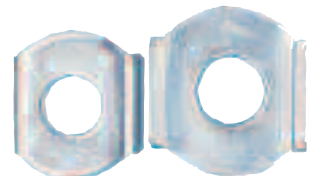
For standard adjustable spindles.



To fit Spindle	Weight each	Order Code
1/4"	8g	<b>IND-443 -8600K</b>
5/16"	15g	<b>-8620K</b>
3/8"	24g	<b>-8640K</b>
1/2"	45g	<b>-8660K</b>

**Flanged Washers**

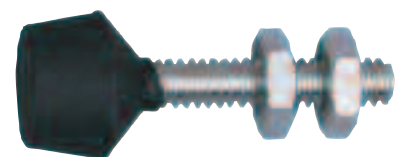
For use in conjunction with all spindles on clamps with adjustable 'U' bars.



To fit Spindle	Weight each	Order Code
5/32" (No.8/M4)	2g	<b>IND-443 -8700K</b>
3/16" (No.10)	2g	<b>-8720K</b>
1/4"	4g	<b>-8740K</b>
5/16" (M8)	10g	<b>-8780K</b>
3/8" (M10)	15g	<b>-8800K</b>
1/2"	37g	<b>-8820K</b>
5/8"	49g	<b>-8840K</b>

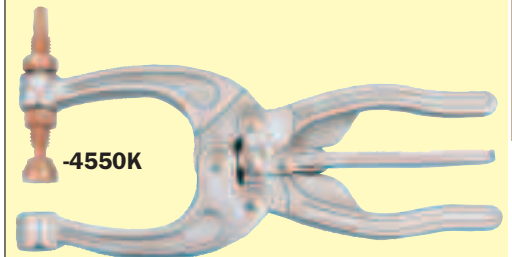
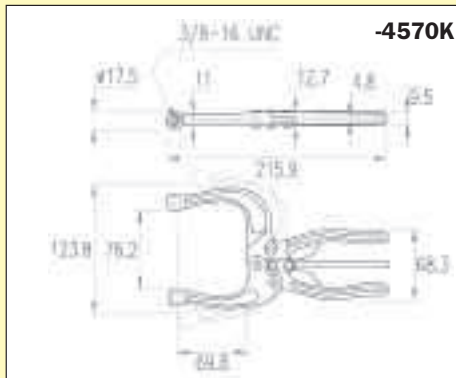
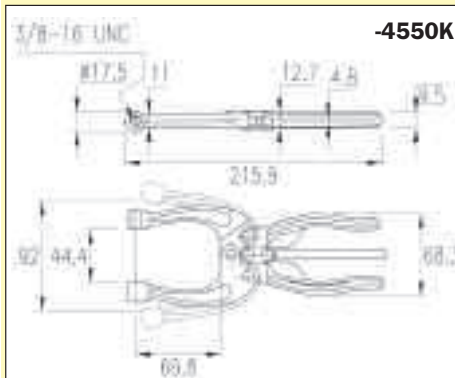
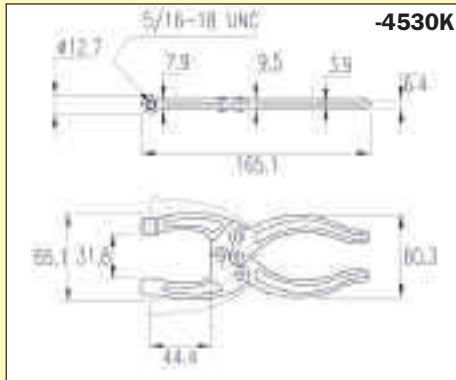
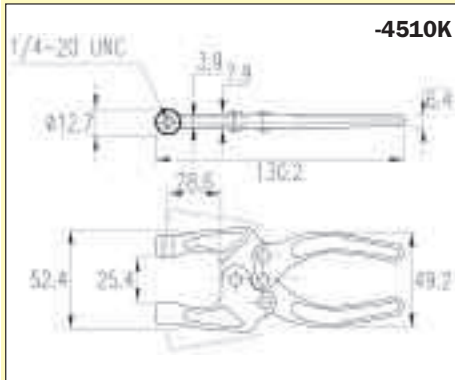
**Neoprene Capped Spindles**

For use with adjustable 'U' bar type clamps and solid bar type clamps that have bolt retainers.



Size	Length	Weight each	Order Code
M4 x 0.7	25mm	5g	<b>IND-443 -8020K</b>
M8 x 1.25	63mm	34g	<b>-8100K</b>
M10 x 1.5	85mm	64g	<b>-8140K</b>
No 10UNC	1 3/8"	9g	<b>-8200K</b>
1/4" UNC	1 3/4"	16g	<b>-8220K</b>
5/16" UNC	2 1/2"	31g	<b>-8260K</b>
3/8" UNC	3 1/2"	58g	<b>-8300K</b>
1/2" UNC	3 3/4"	125g	<b>-8340K</b>

Toggle pliers have the advantage of a pivoting jaw mechanism to allow a deep throat depth to open and close easily for clamping awkward profiles such as steel angle section. The spindle clamping distance and pressure can be pre-set to and is ideal for repetitious applications.



## Plain Handle

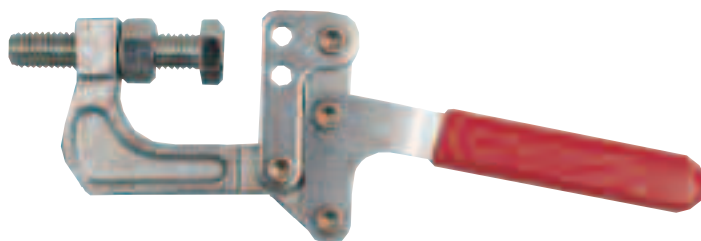
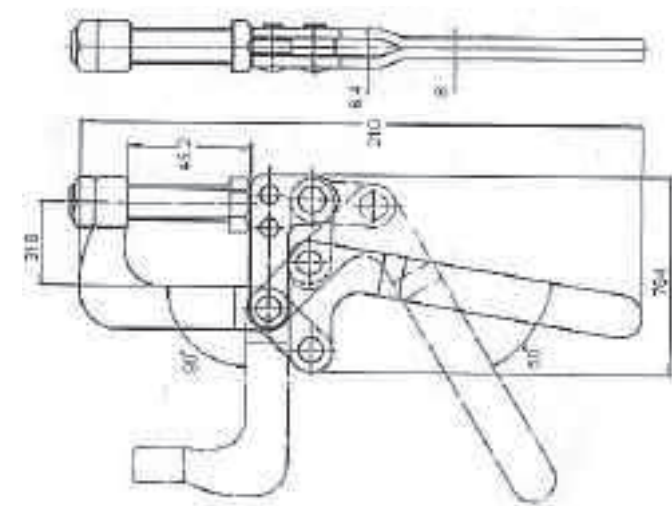
Holding Capacity	Jaw Opening Min.	Max.	Standard Spindle Supplied	Order Code <b>IND-443</b>
90kg	25.4	52.4	Hex. Head	<b>-4510K</b>
159kg	31.8	65.1	Hex. Head	<b>-4530K</b>

## Quick Release Handle

Holding Capacity	Jaw Opening Min.	Jaw Opening Max.	Standard Spindle Supplied	Order Code <b>IND-443</b>
318kg	44.4	92.0	Swivel	<b>-4550K</b>
318kg	76.2	123.8	Hex. Head & Swivel	<b>-4570K</b>

### ***Cam Type Toggle G-Clamp (Pull Back Clamp)***

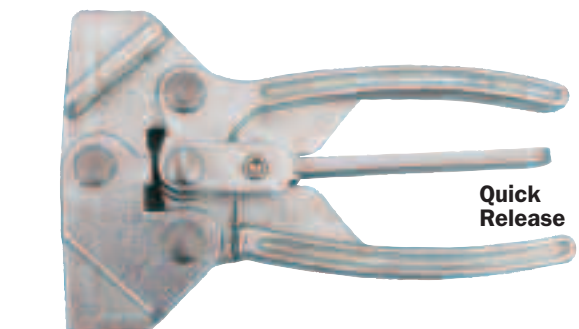
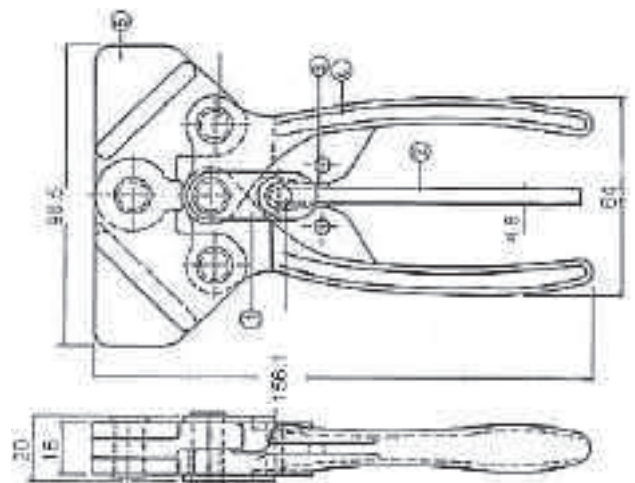
To securely fix the clamp into position the base can be welded to the work surface.



Holding Capacity	Jaw Opening	Jaw Movement	Handle Movement	Order Code
340kg	45.2mm	90°	50°	<b>IND-443</b> <b>-5510K</b>

### 'Stub' Type Toggle Pliers

With two stub arms for easy linking to special jaw extensions.



Holding Capacity	Closed Head Width	Overall Length	Order Code
500kg	98.5mm	156.1mm	<b>IND-443</b> <b>-4590K</b>