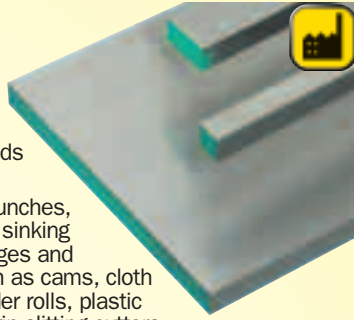


INDEXA Precision Ground Flat Stock



Precision ground flat stock supplied in **1.2510 (100MnCrW1)** Tool Steel, a wide range of Metric sizes. Oil hardening tool steel supplied in annealed condition. It offers good durability, gives excellent wear resistance and holds a good cutting edge. An excellent general purpose grade.

Applications include medium run dies, press tools, drawing punches, broaches, bushings, lathe centres, chuck jaws, master cavity sinking hobs, paper cutting machine knives, plug gauges, thread gauges and precision measuring tools. It is also used in applications such as cams, cloth cutting knives, cold taps, reamers, trimmer dies, tube expander rolls, plastic moulds and woodworking knives, collets, cutting hobs and strip slitting cutters.

Top & bottom surfaces will be supplied in ground condition. Both ends supplied sawn cut. Surface Roughness: Max 3.2my.

Ground Flat Stock Tolerances

Thickness: -0/+0.005mm; Width: -0/+0.20mm; Length: -5/+5.00mm; Square Bars: -0/+0.10mm

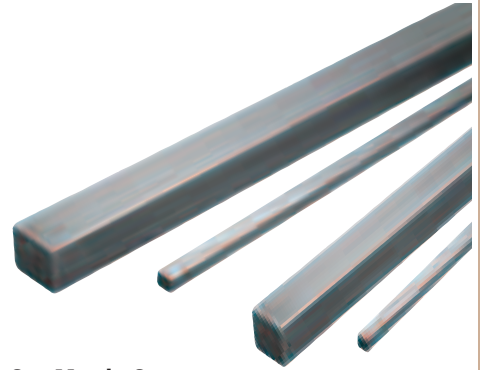
Size (mm)	Order Code IND-413	Size (mm)	Order Code IND-413
2 x 10 x 500	-3300A	8 x 30 x 500	-3805F
2 x 15 x 500	-3301B	8 x 40 x 500	-3806G
2 x 20 x 500	-3302C	8 x 50 x 500	-3807H
2 x 25 x 500	-3303D	8 x 60 x 500	-3808J
2 x 40 x 500	-3305F	8 x 75 x 500	-3809K
2 x 50 x 500	-3306G	8 x 100 x 500	-3811M
3 x 10 x 500	-3400A	8 x 150 x 500	-3813P
3 x 15 x 500	-3401B	10 x 10 x 500	-3900A
3 x 20 x 500	-3402C	10 x 15 x 500	-3901B
3 x 25 x 500	-3403D	10 x 20 x 500	-3902C
3 x 30 x 500	-3404E	10 x 25 x 500	-3903D
3 x 40 x 500	-3405F	10 x 30 x 500	-3904E
3 x 50 x 500	-3406G	10 x 40 x 500	-3905F
3 x 75 x 500	-3408J	10 x 50 x 500	-3906G
3 x 100 x 500	-3410L	10 x 60 x 500	-3907H
3 x 150 x 500	-3412N	10 x 80 x 500	-3909K
4 x 15 x 500	-3501B	10 x 100 x 500	-3910L
4 x 20 x 500	-3502C	10 x 125 x 500	-3911M
4 x 25 x 500	-3503D	10 x 150 x 500	-3912N
4 x 30 x 500	-3504E	12 x 12 x 500	-4100A
4 x 40 x 500	-3505F	12 x 30 x 500	-4104E
4 x 50 x 500	-3506G	12 x 40 x 500	-4105F
4 x 60 x 500	-3507H	12 x 50 x 500	-4106G
4 x 100 x 500	-3510L	12 x 60 x 500	-4107H
5 x 15 x 500	-3601B	12 x 100 x 500	-4110L
5 x 20 x 500	-3602C	12 x 125 x 500	-4111M
5 x 25 x 500	-3603D	12 x 150 x 500	-4112N
5 x 30 x 500	-3604E	15 x 20 x 500	-4201B
5 x 40 x 500	-3605F	15 x 25 x 500	-4202C
5 x 50 x 500	-3606G	15 x 30 x 500	-4203D
5 x 75 x 500	-3608J	15 x 40 x 500	-4204E
5 x 100 x 500	-3610L	15 x 50 x 500	-4205F
5 x 150 x 500	-3612N	15 x 100 x 500	-4209K
6 x 15 x 500	-3702C	15 x 150 x 500	-4211M
6 x 20 x 500	-3703D	20 x 20 x 500	-4300A
6 x 25 x 500	-3704E	20 x 25 x 500	-4301B
6 x 30 x 500	-3705F	20 x 30 x 500	-4302C
6 x 40 x 500	-3706G	20 x 40 x 500	-4303D
6 x 50 x 500	-3707H	20 x 50 x 500	-4304E
6 x 60 x 500	-3708J	20 x 75 x 500	-4306G
6 x 75 x 500	-3709K	20 x 100 x 500	-4308J
6 x 100 x 500	-3711M	20 x 150 x 500	-4310L
6 x 150 x 500	-3713P	25 x 25 x 500	-4400A
6 x 200 x 500	-3714Q	25 x 40 x 500	-4402C
8 x 15 x 500	-3802C	25 x 50 x 500	-4403D
8 x 20 x 500	-3803D	25 x 75 x 500	-4405F
8 x 25 x 500	-3804E		

Industrial Key Steel

High grade mild steel. Available in square or rectangular sections.

Metric manufactured from: **BS4235 Part 7 1972 grade steel** equivalent to **DIN 6885**.

Inch manufactured from: **BS46 PART 7 1958 grade steel**. Length: 300mm and 12". Other sizes available on request.



Set Metric Square

Contents: 4, 5, 6, 8, 10 and 12mm.

No. of Pieces	Weight each	Order Code KEN-421
6	850g	-0500K

Square – Metric

Type	Size	Order Code KEN-421
mm	2mm	-0020K
	3mm	-0030K
	4mm	-0040K
	5mm	-0050K
	6mm	-0060K
	7mm	-0070K
	8mm	-0080K
	10mm	-0100K
	12mm	-0120K
	14mm	-0140K
	16mm	-0160K
	18mm	-0180K
	20mm	-0200K
22mm	-0220K	
25mm	-0250K	

Square – Inch

Type	Size	Order Code KEN-421
inch	1/8"	-3080K
	5/32"	-3100K
	3/16"	-3120K
	1/4"	-3160K
	5/16"	-3200K
	3/8"	-3240K
	7/16"	-3280K
	1/2"	-3320K
	9/16"	-3360K
	5/8"	-3400K
	3/4"	-3480K
	7/8"	-3560K
	1"	-3640K

Rectangular – Metric

Type	Size	Order Code KEN-421
mm	8 x 5mm	-0850K
	8 x 7mm	-0870K
	10 x 8mm	-1080K
	12 x 8mm	-1280K
	12 x 10mm	-1300K
	14 x 9mm	-1490K
	16 x 10mm	-1610K
	18 x 11mm	-1910K
	20 x 12mm	-2120K
	22 x 14mm	-2400K
	25 x 14mm	-2420K
	28 x 16mm	-2550K
	32 x 18mm	-2650K
36 x 20mm	-2700K	

KENNEDY Steel Shim

Designed to achieve accurate alignment. High quality steel to prevent corrosion from exposure to acids or alkalis. With rounded corners, perfectly deburred for maximum safety. Permanent markings indicate thickness and dimensions. Extraction and insertion tabs facilitate positioning and removal of the shims.

EN2. CS4 fully hardened bright mild steel. 6" wide. 1lb tins.

Thickness	Length	Weight each	Order Code KEN-415
0.002"	24'4"	454g	-6020K
0.003"	15'6"	454g	-6030K
0.004"	12'2"	454g	-6040K
0.005"	9'8"	454g	-6050K
0.006"	7'8"	454g	-6060K
0.007"	7'0"	454g	-6070K
0.008"	6'0"	454g	-6080K
0.010"	4'1"	454g	-6100K
0.012"	3'9"	454g	-6120K
0.015"	3'4"	454g	-6150K
0.020"	2'5"	454g	-6200K
0.025"	2'0"	454g	-6250K

Assorted pack

Contains one of each of the following thickness of shim:

0.002", 0.003", 0.004", 0.005", 0.006", 0.008", 0.010", 0.015".

8 PIECES



Number of Pieces	Lengths	Weight each	Order Code KEN-415
8	11"	0.60kg	-6650K