

**KENNEDY** **Portable Bench & Vice**

Rapid clamping. Full graduated working surface with channelled chuck block guides. Includes four adjustable chuck blocks and 4 profile blocks. Aluminium mitre guides and lower support arm to assist power tool use. Rapid fold/unfold with quick lock and release action, compact and easy to store.



**Rapid clamping**



**Rapid fold/unfold with auto lock**



**Lower support arm**



**Aluminium mitre guide**



**Mitre clamping**

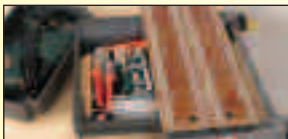
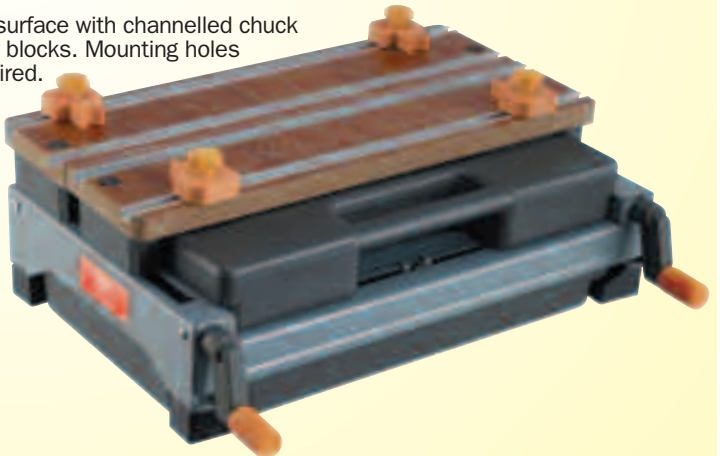
**Spare Parts**

Description	Order Code
4 in 1 portable workbench	<b>-4600K</b>

Description	Order Code
Spare clamping block	<b>-4610K</b>
Replacement Rubber Feet (Pk 4)	<b>-4620K</b>

**Portable Bench Top Workstation**

Includes two trays to store tools & small parts. Full graduated working surface with channelled chuck block guides. Includes four adjustable chuck blocks and profile adaptor blocks. Mounting holes in the feet of the workstation allow it to be fitted to a workbench if required. Compact, portable with carry handle and easy to store.



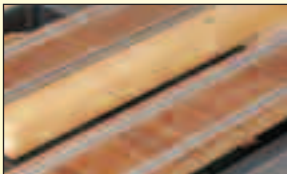
**Storage trays**



**Mitre clamping**



**Compact, portable and easy to store**



**Fully graduated working surface**

Description	Order Code
4 in 1 Portable Workbench	<b>-4700K</b>
<b>Spare Parts</b>	
Spare Clamping Block	<b>-4610K</b>
Spare Clamping Handle with Sleeve	<b>-4720K</b>

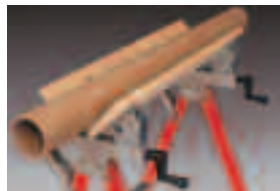
**SENATOR** **Home Improver Workbench & Vice**

Medium duty for hobby and DIY use. All steel body. Durable worktop with metric/inch gauging scale and protractor markings. Easy to assemble. Sturdy splay legs with non-slip rubber feet. Four quick-change worktop functions. Supplied with four chuck blocks, assembly spanners and instructions.

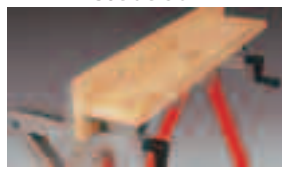
- Worktop width:** 600mm.
- Worktop depth (individual):** 115mm.
- Worktop depth (combined):** 230mm.
- Overall height:** 800mm.
- Width (when collapsed for storage):** 280mm.
- Maximum opening capacity:** 140mm.
- Maximum clamping capacity (with blocks):** 285mm.
- Weight capacity:** 200kg/440lbs.



**Transforms to an upright vice with jaws set at 90°**



**Transforms to a versatile saw-horse with jaws set at 45°**



**Transforms to a T-vice**



**Ideal for clamping pipe and other convex workpieces**



**Solid hardwood worktop with protractor and rule markings.**

Height (mm)	Width (mm)	Order Code
800	600	<b>-9650K</b>



**Cabinet with Shelf & Workbench**

Manufactured from cold rolled steel plate with a hard wearing corrosion resistant powder coated finish. Hard wearing solid wooden work surface. Two shelves. Adjustable feet. Supplied with assembly instructions.

**Maximum shelf capacity:** 20kg.  
**Maximum cabinet capacity:** 150kg.



SELF ASSEMBLY  
Tools Required

Weight	Order Code
25.5kg	<b>SEN-405</b> -5030K

**Locking Cabinet & Workbench**

Lockable storage cabinet with two shelves.

**Overall dimensions (W x D x H):** 838 x 508 x 852mm.  
**Max shelf capacity:** 20kg.  
**Max cabinet capacity:** 150kg.



SELF ASSEMBLY  
Tools Required

Weight	Order Code
27.0kg	<b>SEN-405</b> -5020K

**5 Drawer Cabinet & Workbench**

The five drawers have a smooth action sliding mechanism.



SELF ASSEMBLY  
Tools Required

Weight	Order Code
43.0kg	<b>SEN-405</b> -5010K

**Locking Cabinet with Shelf & Workbench**

Lockable storage cabinet with two shelves and two open shelves for additional storage.

**Overall dimensions (W x D x H):** 1372 x 508 x 865mm.  
**Max shelf/drawer capacity:** 25kg.  
**Max cabinet capacity:** 180kg.



**Shelf Capacity**  
**25kg**  
Uniformly Distributed Load

SELF ASSEMBLY  
Tools Required

Dimensions W x D x H (mm)	Weight	Order Code
1372 x 508 x 865	48.5kg	<b>SEN-405</b> -5040K

**5 Drawer Cabinet & Shelved Workbench**

The five drawers have a smooth action sliding mechanism. Two open shelves for additional storage.

**Overall dimensions (W x D x H):** 1372 x 508 x 865mm.  
**Max shelf drawer capacity:** 25kg.  
**Max cabinet capacity:** 180kg.



**Shelf Capacity**  
**25kg**  
Uniformly Distributed Load

SELF ASSEMBLY  
Tools Required

Dimensions W x D x H (mm)	Weight	Order Code
1372 x 508 x 865	61.0kg	<b>SEN-405</b> -5050K

**KENNEDY 2 Drawer Workbench**

Professional quality two drawer workbench constructed from heavy gauge steel for sturdy long-term use. Ideal for a range of workshop and industrial applications. Drawers are lockable and fitted with smooth glide drawer runners. Full length storage shelf. Quick and easy assembly. Powder coated finish.

**Dimensions (W x D x H):** 1500 x 640 x 865mm.



**Shelf Capacity**  
**40kg**  
Uniformly Distributed Load

Dimensions (W x D x H)	Weight	Order Code
1500 x 640 x 865	77.4kg	<b>KEN-405</b> -2320K

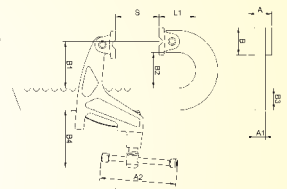
SELF ASSEMBLY  
Tools Required

**INDEXA Standard Duty Rack Clamps**

For various engineering and maintenance applications across all industrial sectors. A bright yellow epoxy coating gives the sliding jaw and J bar added protection, preventing significant deterioration and prolonging the working life of the working parts.

**Features:** Spring loaded jaw that stays in position when pressure removed. Jaw moves to securely clamp angled surfaces. No long screws to bend. Tightening the clamps does not impose rotation to the workpiece.

**Applications:** Metal fabrication. Welding. Machining. Site maintenance. Moulding box and die holding. Toolroom. Plastic and fibreglass moulding. Plate fabrication.



**NEW**

Product Number	Capacity (S)	Load (KN)	Weight Kg	A	A1	A2	B	B1	B2	B3	B4	L	L1	Order Code
SD150	150		1.3									279		<b>-7815K</b>
SD300	300		1.9									429		<b>-7830K</b>
SD500	500	10	2.4	25	10	76	32	60	47	30	76	629	43.5	<b>-7850K</b>
SD750	750		3.1									879		<b>-7875K</b>