



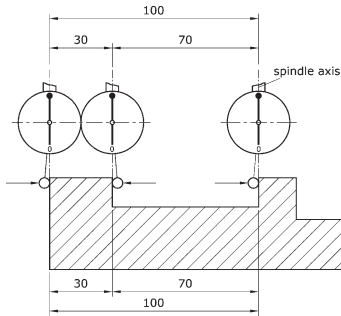
**KENNEDY** 3D Axis Gauging  
QUALITY INDUSTRIAL TOOLING

The New Generation of NC axis gauging equipment, for quick, accurate setting of all three axes (X, Y, Z) by analogue differential indicator. Suitable for all machine tools with CNC, NC or DRO and also for EDM/spark erosion tools - the stylus is electrically insulated from the spindle. Universal - one tool measures length, height, diameter and centre. The synchronous single needle allows greater needle displacement before reaching '12 o'clock'. A positive reading is given regardless of direction of axis movement. No calculations and no 'trial and error' involved. Increases production and efficiency, reduces job time and operator requirement. The stylus is designed to break on a 'nominal fracture' before the workpiece or tester can be damaged. Three plug in styli types can be changed in seconds without the use of special tools.

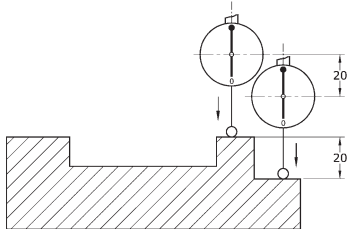
Pre-adjusted to a concentricity of 0.01mm maximum.

**Indicator diameter:** 50mm.

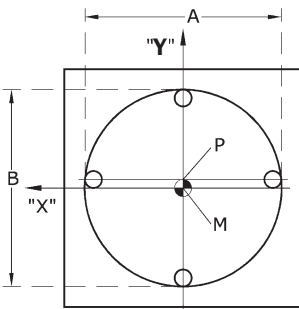
**Clamping shank diameter:** 16mm.



**a. Measuring length**



**b. Measuring height**



**c. Establishing true centre and diameter of bores.**

Insert stylus roughly in centre of bore, measure distance A and divide by 2 (P). Measure distance B in Y direction, across point P and divide by 2.

Result: true centre point (M). Repeat measuring of distance A.



**3D Axis Gauge**

Indicator Dia.	Effective Length	Shank Dia.	Weight each	Order Code	Offer Price/1
50mm	125mm	16mm	89g	<b>KEN-302</b> -2010K	<b>£281.40</b>

**Stylii**

Conical precision plug-in mechanism. Insulated, no electrical conductivity. Designed-in nominal fracture point.

Type	Length mm	Anvil Dia.	Weight each	Order Code	Offer Price/1
Short	33	4.0	3g	<b>KEN-302</b> -2130K	<b>£24.41</b>
Long	72	6.0	10g	<b>-2170K</b>	<b>£30.42</b>

**CONTRACT PRICES AVAILABLE FOR VOLUME PURCHASES**